

COUNTY COUNCIL

Mel Rapozo, Chair
Ross Kagawa, Vice Chair
Arthur Brun
Mason K. Chock
Arryl Kaneshiro
Derek S.K. Kawakami
JoAnn A. Yukimura



Council Services Division
4396 Rice Street, Suite 209
Lihu'e, Kaua'i, Hawai'i 96766

OFFICE OF THE COUNTY CLERK

Jade K. Fountain-Tanigawa, County Clerk
Scott K. Sato, Deputy County Clerk

Telephone: (808) 241-4188
Facsimile: (808) 241-6349
E-mail: cokcouncil@kauai.gov

As of December 13, 2017, 1:00 p.m.

Attached is a Floor Amendment that was introduced and approved at the December 13, 2017 Special Planning Committee Meeting.

(December 13, 2017)

FLOOR AMENDMENT

Bill No. 2666, Update to the General Plan of the County of Kaua'i

Introduced by: COUNCILMEMBER JOANN A. YUKIMURA
AND COUNCILMEMBER MEL RAPOZO

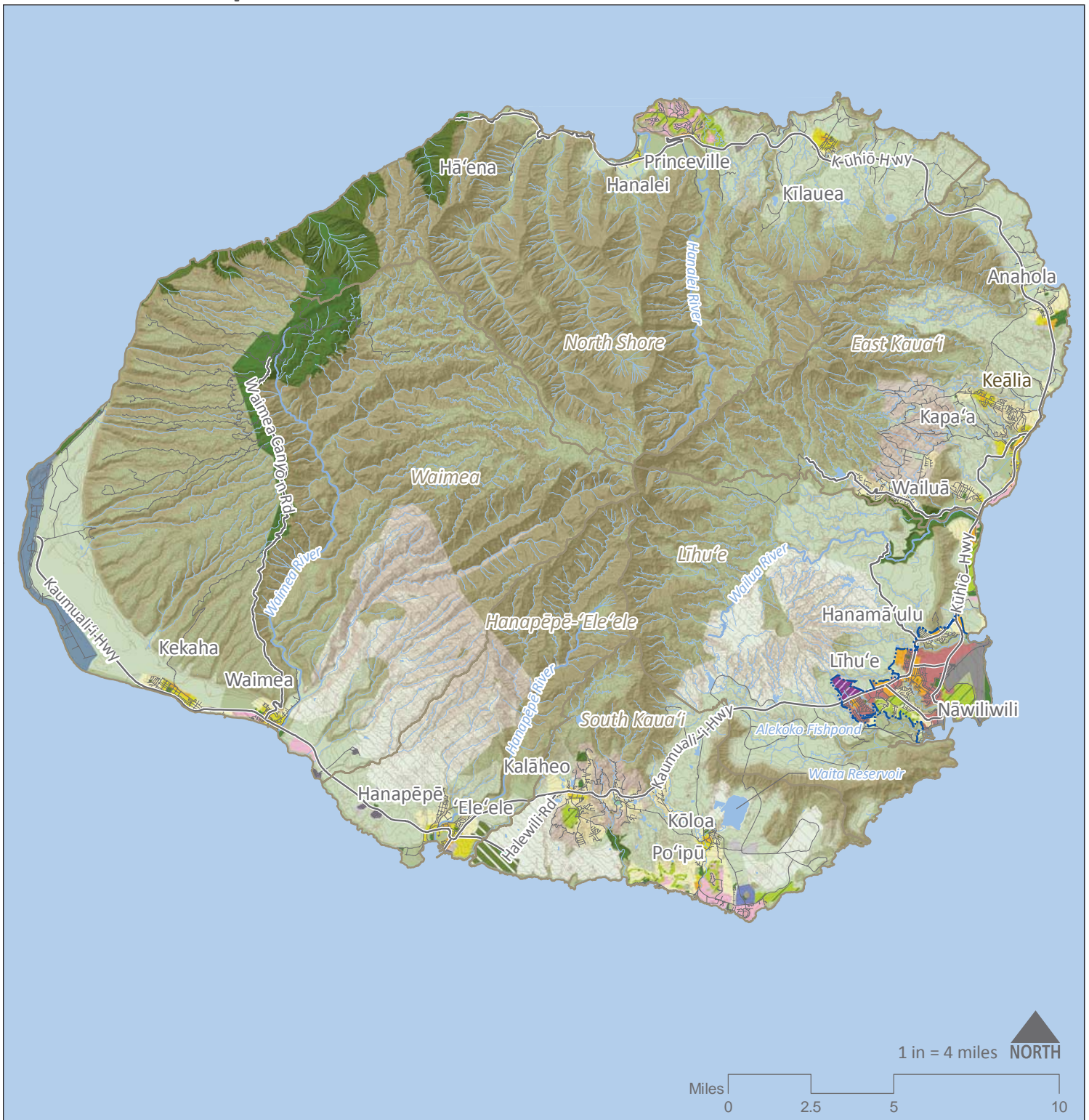
AMENDMENT	PLANNING DEPARTMENT'S POSITION (INFORMATIONAL ONLY)
1. Amend Bill No. 2666 by amending the booklet entitled "Planning Commission Draft" dated "June, 2017," including all Appendices, by amending 5.0 Policy Maps, 5.2 Future Land Use Maps, Figure 5-1 (Kaua'i Land Use Map) (page 225) and Figure 5-7 (North Shore Land Use Map) (page 237) as attached (See Attachment 1) to remove the Resort Designation of "Princeville, Phase II" and to designate the area "Agriculture" or "Golf Course" (as noted) where present use exists.	Support

2. If any provision that is amended is also found elsewhere, such language is hereby amended to provide consistency.
3. If more than one amendment to a same section is adopted on this date, all amendments shall take effect to the extent there is no conflict. If there is a conflict, the latest amendment shall be controlling.

(Material to be deleted is bracketed. New material to be added is underscored.)

V:\AMENDMENTS\2017\GENERAL PLAN UPDATE Bill No. 2666 (12-13-2017)\JY & MR Floor Amendment (Princeville Phase II)\Bill 2666 (General Plan Update) FA for JY and MR_dmc.docx

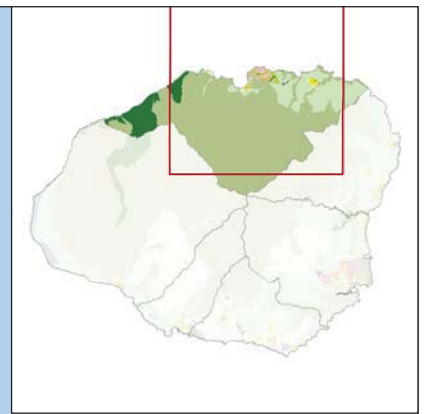
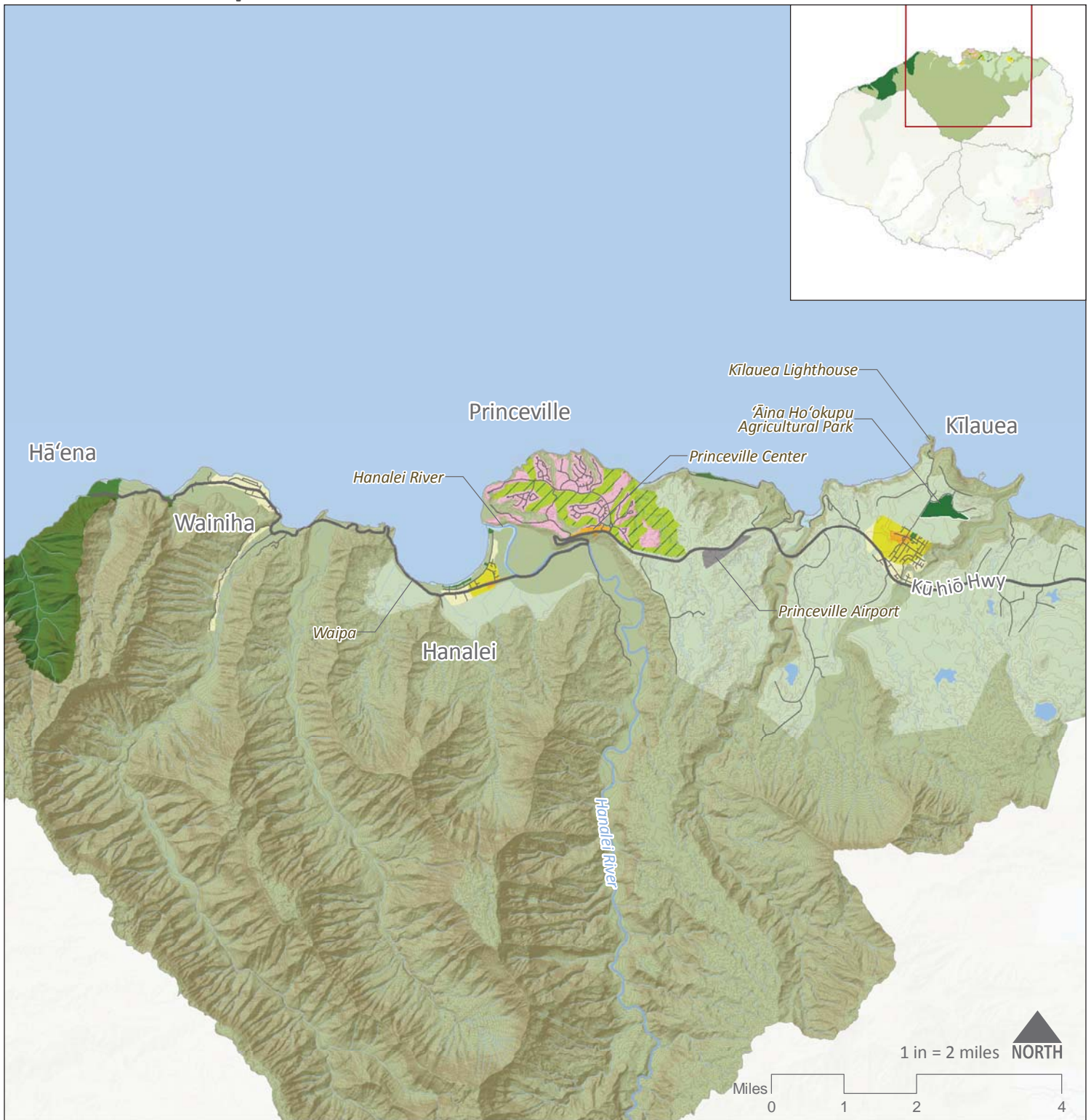
Land Use Map - Kaua'i



- | | | |
|----------------------------|-----------------------|---|
| Planning District Boundary | Agricultural (IAL) | Small Town |
| Major Roads | Parks and Recreation | Resort |
| Roads | Golf Course | Provisional Resort (Pending Community Plan Process) |
| Streams | Homestead | University Zone |
| USGS 40 ft. Contours | Residential Community | Plantation Camp |
| Urban Edge Boundary | Urban Center | Industrial |
| Reservoirs | Neighborhood Center | Transportation |
| Natural | Neighborhood General | Military |
| Agricultural | Large Town | Provisional Agriculture |

APPROVED (F2-13-2017)

Land Use Map - North Shore



- Planning District Boundary
- Major Roads
- Roads
- Streams
- USGS 40 ft. Contours
- Reservoirs
- Natural
- Agricultural

- Agricultural (IAL)
- Parks and Recreation
- Golf Course
- Homestead
- Residential Community
- Neighborhood Center
- Neighborhood General
- Resort

- Transportation
- Military

APPROVED (12-13-2017)