



DEREK S.K. KAWAKAMI, MAYOR
MICHAEL A. DAHLIG, MANAGING DIRECTOR

News Release

For Immediate Release: June 2, 2022

COUNTY OF KAUA'I
DEPARTMENT OF PUBLIC WORKS
TROY TANIGAWA, ACTING COUNTY ENGINEER
(808) 241-4993

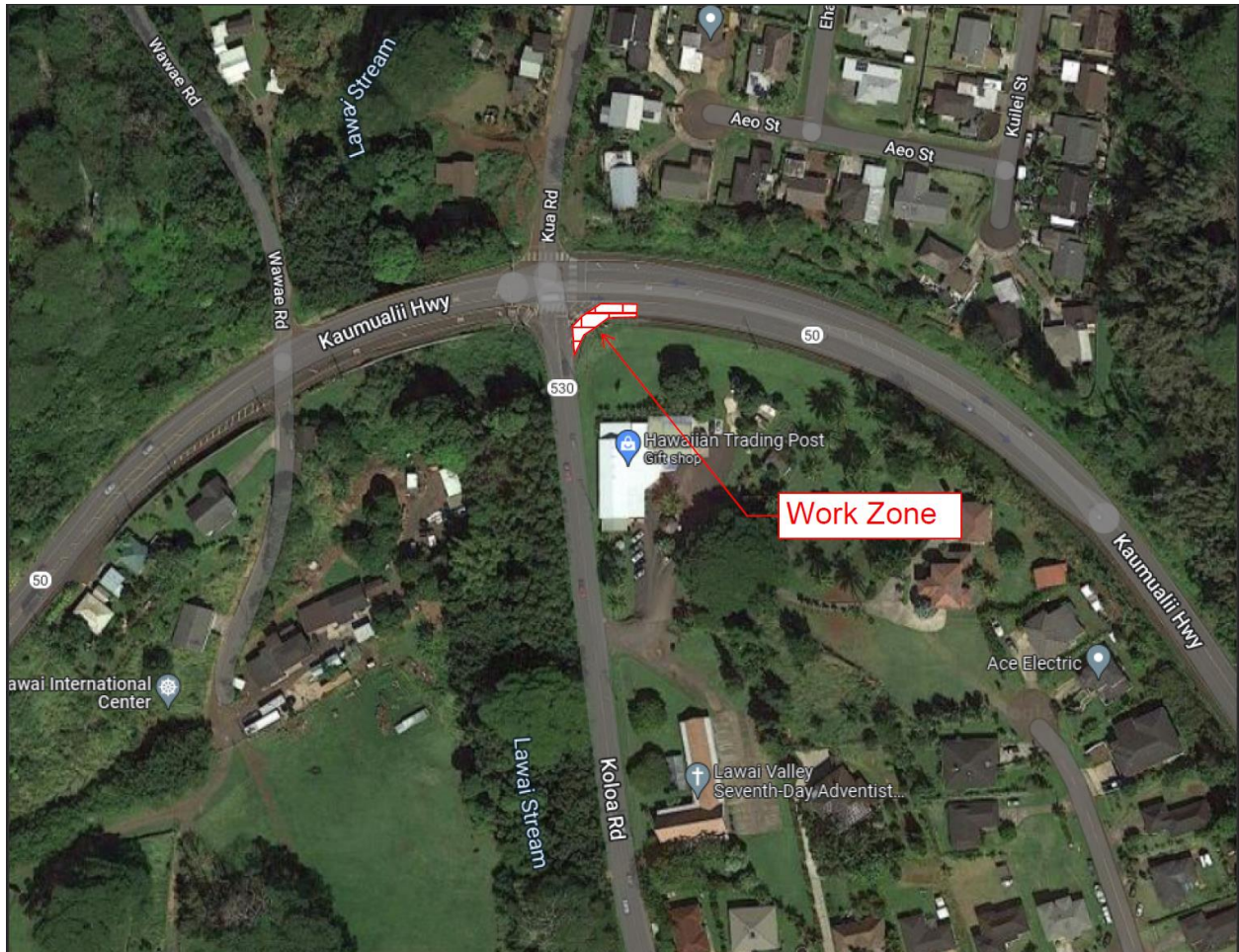
Lane closure at the Intersection of Kōloa Road and Kaumuali'i Highway scheduled from June 6 to June 9

LĀWA'I – The Department of Public Works and Goodfellow Bros. LLC., are announcing a scheduled closure at the turn lane off Kōloa Road onto Kaumuali'i Highway June 6 to June 9 from 8 a.m. to 3:30 p.m.

The closure is necessary to perform underground utility improvements.

Eastbound motorists from the South Side, Kōloa, or Lāwa'i are recommended to take Maluhia Road to access Kaumuali'i Highway.

Dates and times are subject to change depending on weather and other factors. If you have any questions or concerns, please contact Tristan Gonzales at 808-462-8057 or Ryan Moura at 808-298-2431.



###