



*Water has no substitute...
Conserve it!*

Media Contact: Jason Fujinaka
Information Specialist I
Phone: 808- 245-5455
Mobile: 808-755-5432
Email: jfujinaka@kauaiwater.org

News Release

For Immediate Release: November 26, 2018

Water service shutdown reminder for customers located on Kalama Road, Kipapa Road and along a portion of Pu'uopae Road in Kapa'a on Nov. 27

KAPA'A – The Department of Water (DOW) reminds customers located on Kalama Road, Kipapa Road and along a portion of Pu'uopae Road; from Holio Road to Opaeka'a Road in Kapa'a, of a scheduled 4-hour, water service shutdown on Tuesday, November 27 from 9 a.m. to 1 p.m., weather permitting.

The water service shutdown is necessary in order to allow contractor, Drayco Construction, Inc. to tie-in a temporary water line to the existing system near Pu'uopae Bridge on Pu'uopae Road.

Customers located in the affected service area are advised to take the following steps:

- Store enough water to meet your needs during the shutdown.
- Notify family, friends and neighbors that may be affected by the shutdown.
- Those with faulty water heaters should ensure that water heaters do not empty during the shutdown.
- To monitor updates online, visit www.facebook.com/KauaiDOW.

For more information please call the Department of Water at 245-5461.

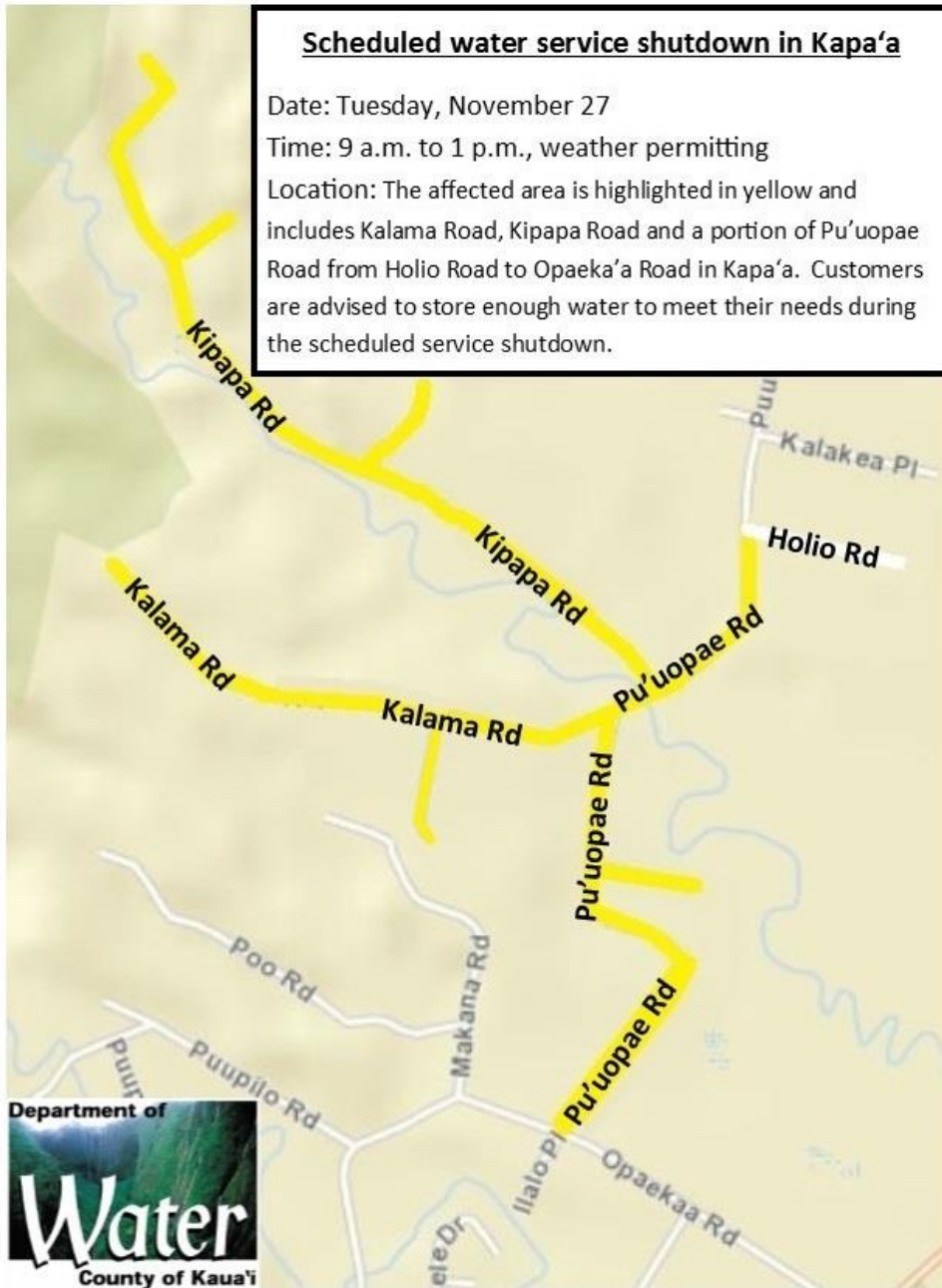
-continued-

Scheduled water service shutdown in Kapa'a

Date: Tuesday, November 27

Time: 9 a.m. to 1 p.m., weather permitting

Location: The affected area is highlighted in yellow and includes Kalama Road, Kipapa Road and a portion of Pu'uopae Road from Holio Road to Opaeka'a Road in Kapa'a. Customers are advised to store enough water to meet their needs during the scheduled service shutdown.



The map above shows the affected area for the water service shutdown scheduled for Nov. 27 from 9 a.m. to 1 p.m., and includes Kalama Road, Kipapa Road and a portion of Pu'uopae Road from Holio Road to Opaeka'a Road in Kapa'a.

###