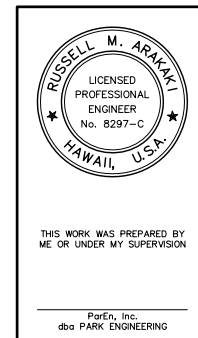
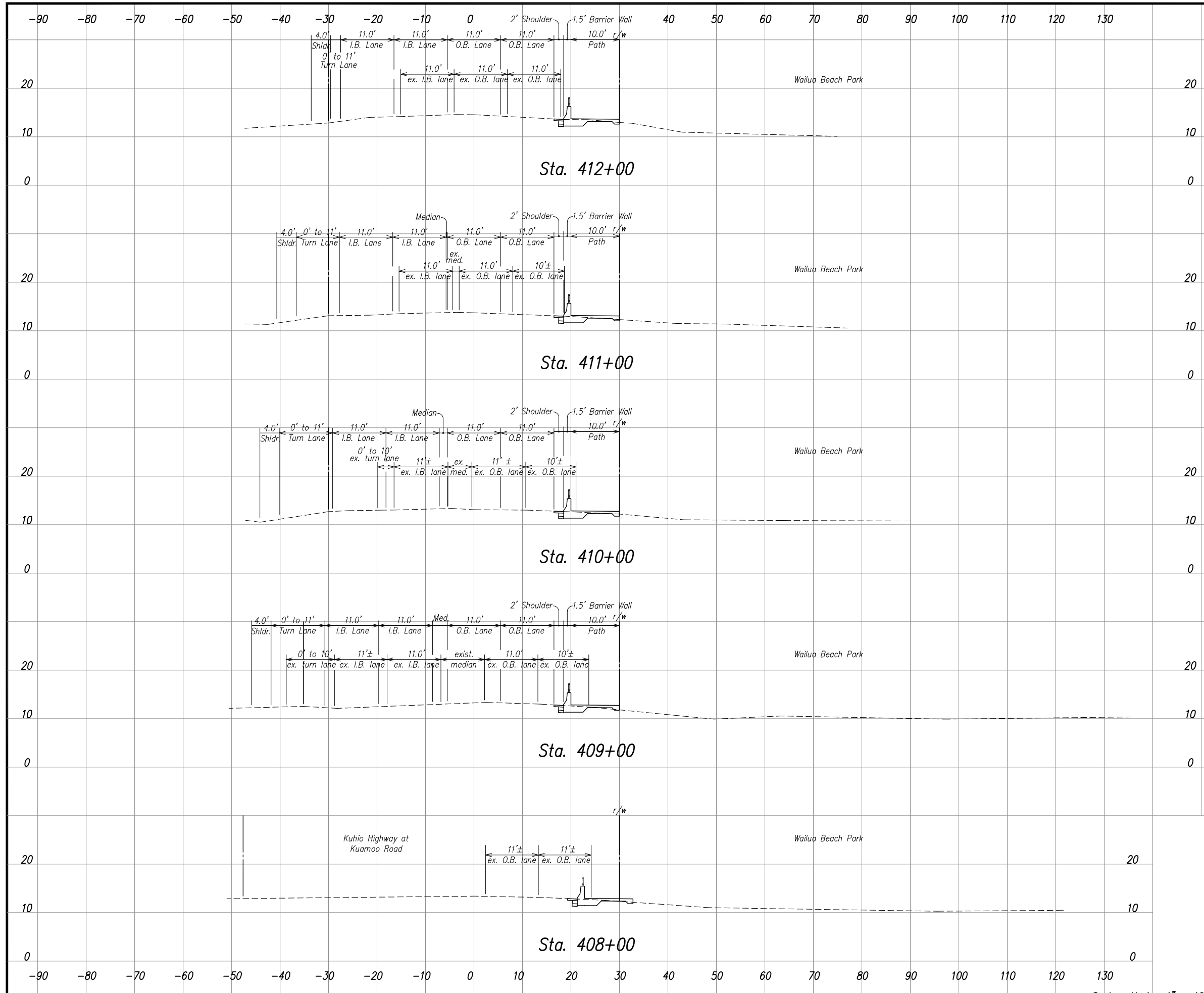


FED. ROAD DIST. NO.	STATE	FED. AID PROJ. NO.	FISCAL YEAR	SHEET NO.	TOTAL SHEETS
HAWAII	HAW.	CMAQ-0700(49)	2008		-



COUNTY OF KAUAI  
 DEPARTMENT OF PUBLIC WORKS

LYDGATE PARK TO LIHI PARK  
 BIKE/PEDESTRIAN PATH  
 WAIALUA TO KAPAA  
 LIHUE AND KAWAIHAU, KAUAI, HAWAII

**CROSS SECTIONS - 1**  
 PROJECT NO. CMAQ-0700 (49)  
 DATE: FEBRUARY 2009

THIS WORK WAS PREPARED BY ME OR UNDER MY SUPERVISION

ParEn, Inc.  
 dba PARK ENGINEERING

DRAWN BY: GKI	F.B.	C.B.
TRACED BY: GKI		
CHECKED BY: RMA		

APPROVED \_\_\_\_\_ COUNTY ENGINEER

SHEET **X-1** OF - SHEETS

Scales: Horiz.: 1" = 10'  
 Vert.: 1" = 10'