

Charging Your Non-Tesla Electric Vehicle





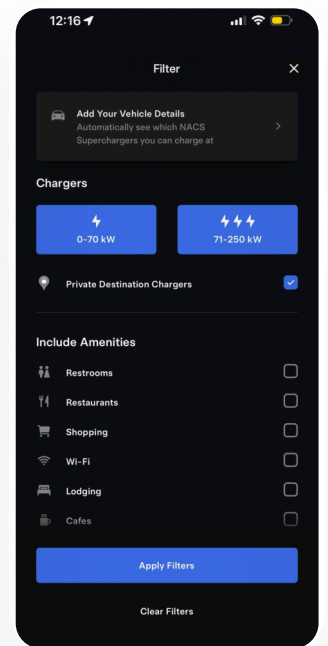
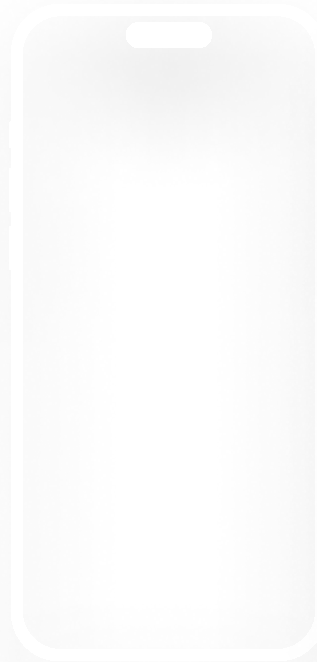
Sign In to the Tesla App

Open or download the Tesla app and sign in or create a new account.



Find a Charging Station

Open 'Charge Your Other EV' in the Tesla app and select a charging site from the map. To find specific chargers, tap the filters icon to select the type of charger you're looking for and then tap 'Apply Filters.'

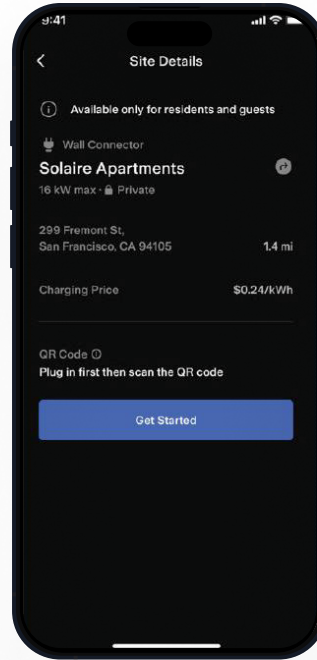


Connect to WiFi

Make sure you are connected to Wi-Fi or have cell reception before trying to access the charging network.

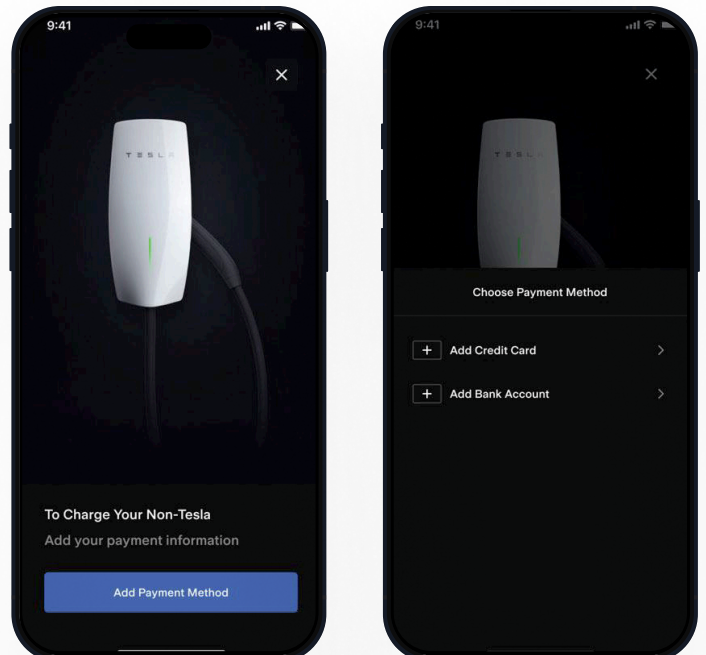
Start Charging

Once you've parked at your charging stall, confirm your location by selecting your site's pin on the map.



Confirm Payment Method

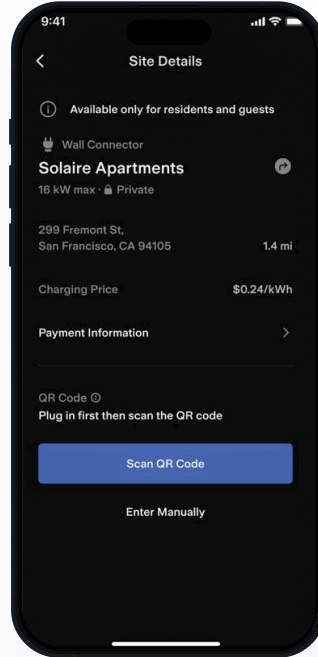
Tap 'Get Started' and enter your preferred payment method and details. Tap 'Save' to continue to charging.





Connect to Your Charging Stall

Plug the charger into your vehicle's charge port. Use the Tesla app to scan the QR code on the left-hand side of Wall Connector. Charging will begin automatically and a green light will appear along the base of Wall Connector while charging is in progress.



Monitor Charge Sessions

Use the Tesla app to see your vehicle's charge status, review session details and track payment history.

