



DEREK S.K. KAWAKAMI, MAYOR
MICHAEL A. DAHLIG, MANAGING DIRECTOR

News Release

For Immediate Release: January 24, 2022

COUNTY OF KAUA'I
DEPARTMENT OF PUBLIC WORKS
TROY TANIGAWA, ACTING COUNTY ENGINEER
(808) 241-4993

Jan. 24 update on Menehune Road closure

WAIMEA – Officials are announcing the following updates for the Waimea community affected by the rockslide that occurred on Menehune Road on Jan. 4.

Road Closure and Slope Stabilization

HiTech, the County's contractor, continued rock scaling work through the weekend. On Sunday, they raked the remainder of scaling debris off the mid and lower slope. Additionally, they secured the rockfall barrier fence to the slope, including replacing damaged mesh panels, securing all connections, and resetting cable anchors. Sunday's work also included manually removing small rocks that fall into the Menehune Ditch during scaling activity.

Contractors anticipate Monday will be the last day of rock scaling work, weather permitting. Once rock scaling is complete, an additional day or two is needed to clean Menehune Road, Menehune Ditch, and for HiTech to demobilize.

As HiTech demobilizes, county officials will further inspect the condition of Menehune Road and begin repairing damages to the pavement caused by the Jan. 4 rockslide. They will also continue to assess the damage caused to the riverside embankment to determine measures needed for repairs.

Intermittent road closures of Menehune Road will be necessary for future work, including road and bridge repairs. A schedule of the intermittent road closures will be announced after damages are assessed and when more details are known. However, officials anticipate the reopening of Menehune

Road to intermittent traffic could occur before the end of January. Contractors continue to work daily, from 7 a.m. to 5 p.m.

While repairs are underway, large, loose boulders will continue to fall onto the roadway below. The public is reminded not to cross or approach the rockfall site at any time. Doing so could result in severe injury or death. The public is urged to heed all warnings and if you need to access the area, please use the alternate route on Panini Road, which is limited to 4 x 4 vehicles, or contact KEMA at 808-241-1800.

Waimea Swinging Bridge

Work to repair the Waimea Swinging Bridge will start after the slope is stabilized. The County has selected a contractor to assist in developing and implementing a strategy to address temporary repairs to stabilize the bridge and restore pedestrian access, along with addressing permanent repairs. More information on the start of repairs will be shared once it becomes available.

Given the historic nature of the bridge, officials expect this to be a long-term repair project. Understanding that the pedestrian bridge is an important point of access to Makaweli residents, officials will continue to work with residents on continued needs. Makaweli residents requiring assistance are urged to contact the Kaua'i Emergency Management Agency (KEMA) at 808-241-1800.

Refuse Service

Refuse collection is set for Tuesday, Jan. 25. Residents are asked to leave their bagged trash in their refuse carts on Monday, Jan. 24, for early-morning pickup on Tuesday.

To ensure efficient pickup, please double bag your household trash and place it in your county-issued refuse carts. For those without refuse carts, please leave your bagged household waste in a covered trash receptacle at the side of the road immediately adjacent to your driveway. Trash should be double-bagged in the event manual loading into a truck becomes necessary. Trash receptacles must not exceed 50 pounds, and more than one covered receptacle may be used. Bulky items, green waste, and loose trash will not be collected at this time.

Wellness Checks/Needs Assessments

While the road remains fully closed, wellness checks and needs assessments will continue for residents along Menehune Road and on the Makaweli-side of the river. Anyone needing assistance is asked to call KEMA at 808-241-1800, who will coordinate with community partners.

Food Distribution

Families are reporting that they have food and supplies for the time being. Supply deliveries will occur, however, on a case-by-case basis.

Panini Road Emergency Access Route

The State Department of Land and Natural Resources (DLNR) has opened an alternate emergency access route from Waimea Canyon Drive, known as Panini Road. The Panini Road access is limited to local residents and first responders via 4 x 4 usage only. Motorists are urged to drive slowly and cautiously, as heavy machinery is in the area, and crews with DLNR are continuing to improve the road.

More Info

If anyone in the affected area requires assistance during work hours, please call the Kaua'i Emergency Management Agency (KEMA) at 808-241-1800. After working hours, please call Kaua'i Police Dispatch at 808-241-1711. If you have an emergency and require immediate assistance, please call 911. If you have a kupuna needing assistance from the Agency on Elderly Affairs, please contact their office at 808-241-4470. If you have a school-aged child who needs assistance with distance learning options, please contact KEMA at 808-241-1800.

Those wishing to provide services or resources are asked to coordinate with KEMA.

A daily newsletter with up-to-date information will continue to be posted online. To view, visit www.kauai.gov/KEMA and click on the blue button at the top of the page labeled "Waimea Valley Rockslide."

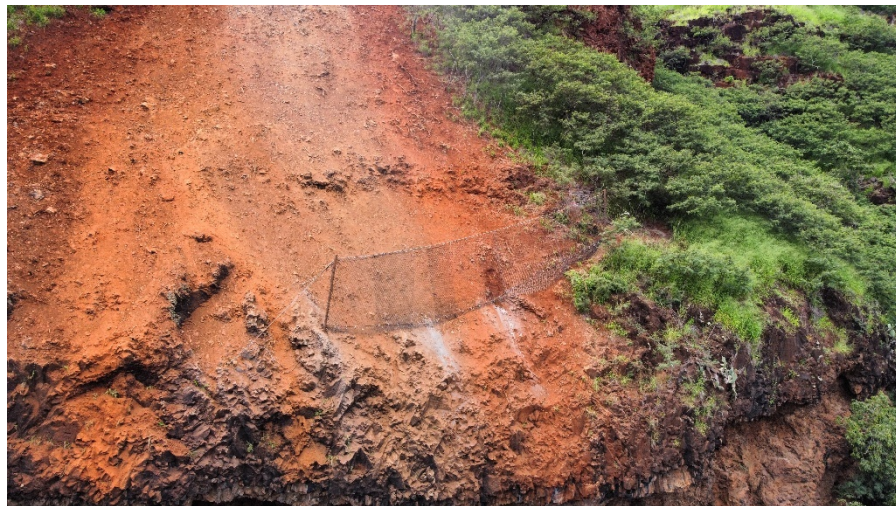
Below photo was taken on Friday, Jan. 21:



Below photos were taken on Saturday, Jan. 22:



Below photos were taken on Sunday, Jan. 23:



###