

Hanapēpē Monument Request for Interest

Application Start Date:	Monday, July 14, 2025
Application Deadline Date:	Monday, September 1, 2025 at midnight (11:59pm) Hawai'i Time
Contact information	County of Kaua'i Planning Department Phone: (808) 241-4050 Email Address: planningdepartment@kauai.gov

Introduction/Overview:

The County of Kaua'i Planning Department and Friends of the Hanapēpē Monument invites artists, designers, and architects, and creators to submit statements of interest and qualifications for a public art installation to be located on a vacant lot in Hanapēpē, Kaua'i to memorialize and commemorate a piece of Hanapēpē history, known as the 1924 Battle of Hanapēpē.

This Request for Interest (RFI) is the first step in a two-step process to select finalists for a commissioned artwork that reflects the County's goals for this monument. At this stage, the RFI seeks to identify interested and qualified artists who will be invited to submit full design proposals in a future step-two or Request for Proposals (RFP) phase.

Background Information and Monument Goals:

The event known as the 1924 Battle of Hanapēpē or the Hanapēpē Massacre was a tragic and violent event that occurred on September 9, 1924, in Hanapēpē, Kaua'i, Hawai'i after nearly 6 months of a labor strike involving Visayan sugar plantation workers. A confrontation ensued between the strikers and sheriff who arrived to retrieve or "arrest" two Ilokano men, who were captured by the strikers the night before. The confrontation resulted in the deaths of 16 strikers and 4 sheriffs. The battle amplified years of labor strife experienced on Kaua'i and across the Hawaiian Islands, remains one of the bloodiest labor confrontations in Hawai'i's history, and is remembered as a significant moment in the story of immigrant labor in the islands. To learn more about the 1924 Battle of Hanapēpē event and access other research and information on

the event, please check out a story map link:

<https://storymaps.arcgis.com/stories/b2a8cbee50cc4f9693c73dcacfe65fd1>

The proposed artwork or monument design should seek to honor all individuals who died, explain the history of the site, and evoke a feeling and sense of healing and peace for the community and generations to come. The artwork should center around themes including, peacemaking, mediation, understanding, cooperation, and respect for life.

Design Parameters:

The proposed artwork should be mindful of the following:

- **The proposed budget has not been determined at this time;** however, it is anticipated to be up to \$200,000, including artist fee, materials, fabrication, transportation to the site, and installation costs.
- **The artwork must be completed and installed by September 1, 2026.**
- The artwork materials should be suited for outdoor weather and will be exposed to the elements.

Site Descriptions:

The location of the monument property is currently a vacant lot located at the intersection of Moi Road and Kaumuali'i Highway in Hanapēpē, Kaua'i. The monument will be installed on TMK No. (4) 1-8-008:071 with parking and access to compliment the monument on (4) 1-8-008:065. Photos of the existing site are provided in Exhibit A.

The existing site conditions, including the trees, are planned to remain mostly as is and in place. The land area of the lot is approximately 0.2867 acres or 12,490 square feet. The proposed monument should be no more than ten (10) feet in height and expand up to no more than a quarter of the lot. Although the rest of the site appears vacant, future phases of this project will include site planning and construction for other amenities such as parking and access. A general building envelope of where the monument will be installed is further detailed in Exhibit B.

Artists may consider the monument property's orientation and location across the street from a hillside where a portion of the battle took place. A map depicting the approximate location of the battle site is provided in Exhibit C.

In addition to the monument, the County wishes to include an interpretive display to educate visitors and residents about the 1924 Battle of Hanapēpē and other historically significant information. The interpretive display may be designed to accompany the monument design or

exist separately from the proposed monument design and can be located either on the monument property or abutting parking lot property.

Submission:

Interested artists should submit the following requirements:

1. **Resume**
2. **At least three (3) images of previously completed work**
3. **The artist's written statement of the monument design concept**
4. **Conceptual drawing(s) and/or design of proposed artwork for this project, materials and method of installation.**

All documents should be submitted on an 8 ½ x 11 sheets of paper if submitted by mail.

Digital submittals should be submitted as a pdf format. Please do not send any canvas, or 3-d materials as part of the submission.

**** All RFI submittals will be used for this monument selection process. All submittals will be returned to the artists at the conclusion of the selection process****

Applications will be accepted either by mail or email and must be received by **Monday, September 1, 2025, at midnight (11:59 pm) Hawai'i Time.**

To send by mail, please send to the following:

County of Kauai Planning Department
Attn: Ms. Marisa Valenciano
4444 Rice Street A473
Līhu'e , HI 96766

To send by email, please send to the following:

Planningdepartment@kauai.gov

Eligibility:

This application process is open to all local, state, national, and international artists, designers, and architects. If selected, applicants shall be responsible for the implementation transportation, construction, and installation of their monument designs.

Artist Selection Process:

Step 1 - Request for Interest Submittals

After the application deadline date of 11:59pm on Monday, September 1, 2025, the County of Kaua'i Planning Department will transmit a copy of all requests for interests (RFI) to a qualification review committee composed of community members, community stakeholders, and government representatives. The qualification review committee will review applicants against a criterion and make a recommendation of up to three (3) qualified finalists. The Planning Department will select and notify these qualified finalists on or by Monday, September 15, 2025.

RFI Evaluation Criteria:

RFI submittals will be evaluated based on the following criteria:

1. Relevant Experience and Professional Capability
2. Past Performance on Similar Projects
3. Capacity to accomplish the Work in the Required Time and Budget
4. Proposal Clarity and Presentation

Step 2 – Finalist Requirements

The finalists will be invited to participate in phase 2 of the selection process where finalists will receive a stipend of \$5,000 to develop a full design proposal. At this stage, finalists will be asked to provide the following:

1. A **model of the proposed monument design** that does not exceed 18 inches in height or width.
2. A **cost or budget breakdown** for the project
3. The **proposed materials** for the artwork
4. **Timeline for the time of performance** to cast, construct, transport, and install the artwork
5. A **written statement or description about the proposed design** for the monument to explain the symbolism or reasoning behind their concept

In addition, all finalists must be available for an in-person presentation and interview regarding the model with the selection committee at a mutually agreed upon date and time. The selection committee will provide the Planning Department a recommendation of one (1) finalist to be awarded the monument commission. The commissioned value and approved budget for this project shall include the artist's fee, materials, fabrication, transportation to the site, and installation costs for the Hanapēpē Monument.

EXHIBIT “A”

Project Site- View from Kaumuali'i Highway facing North towards Hanapēpē Road and Moi Road intersection

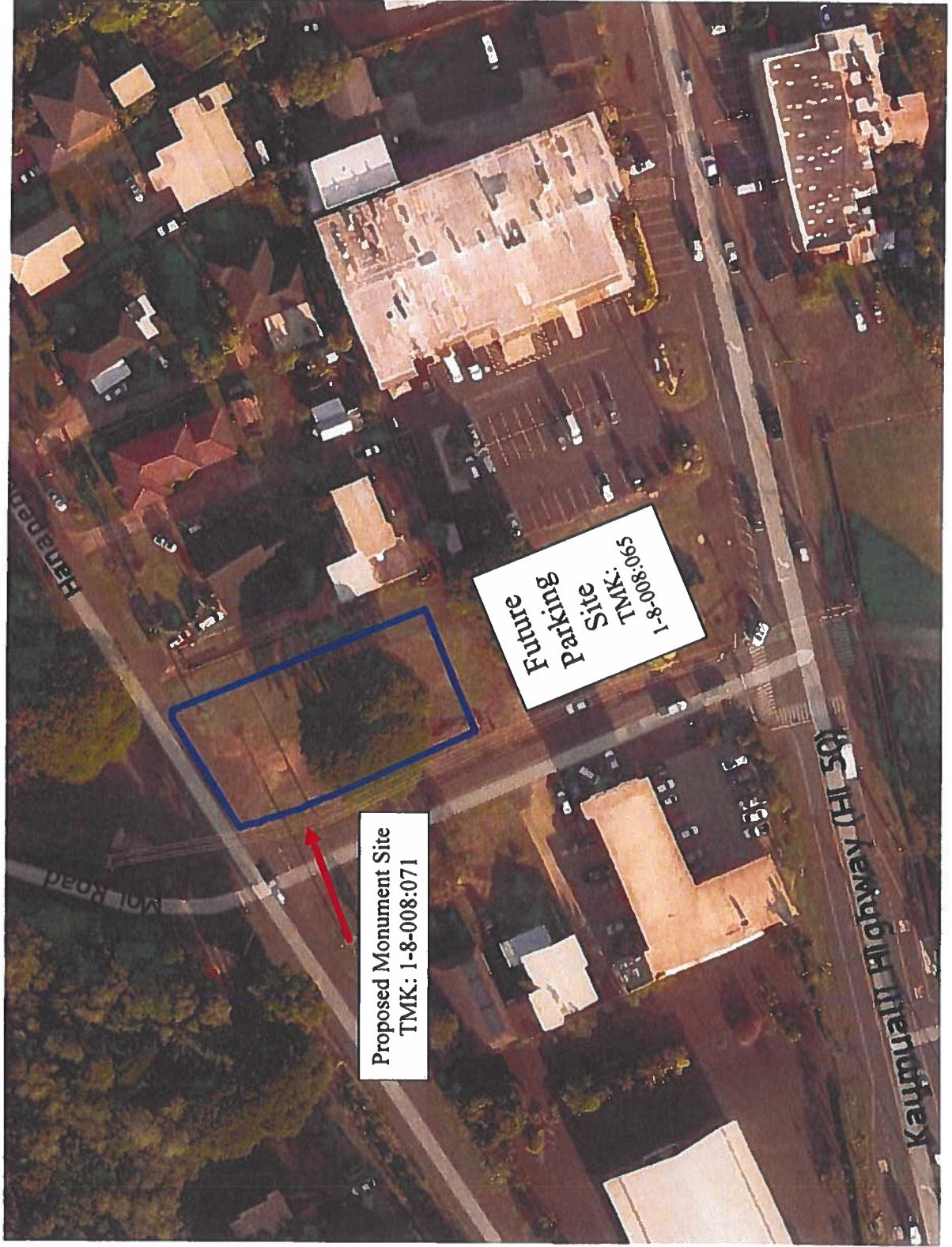


Project Site- View facing Kaumuali'i Highway



EXHIBIT “B”

Aerial View



Zoomed in Aerial



Aerial View (North)

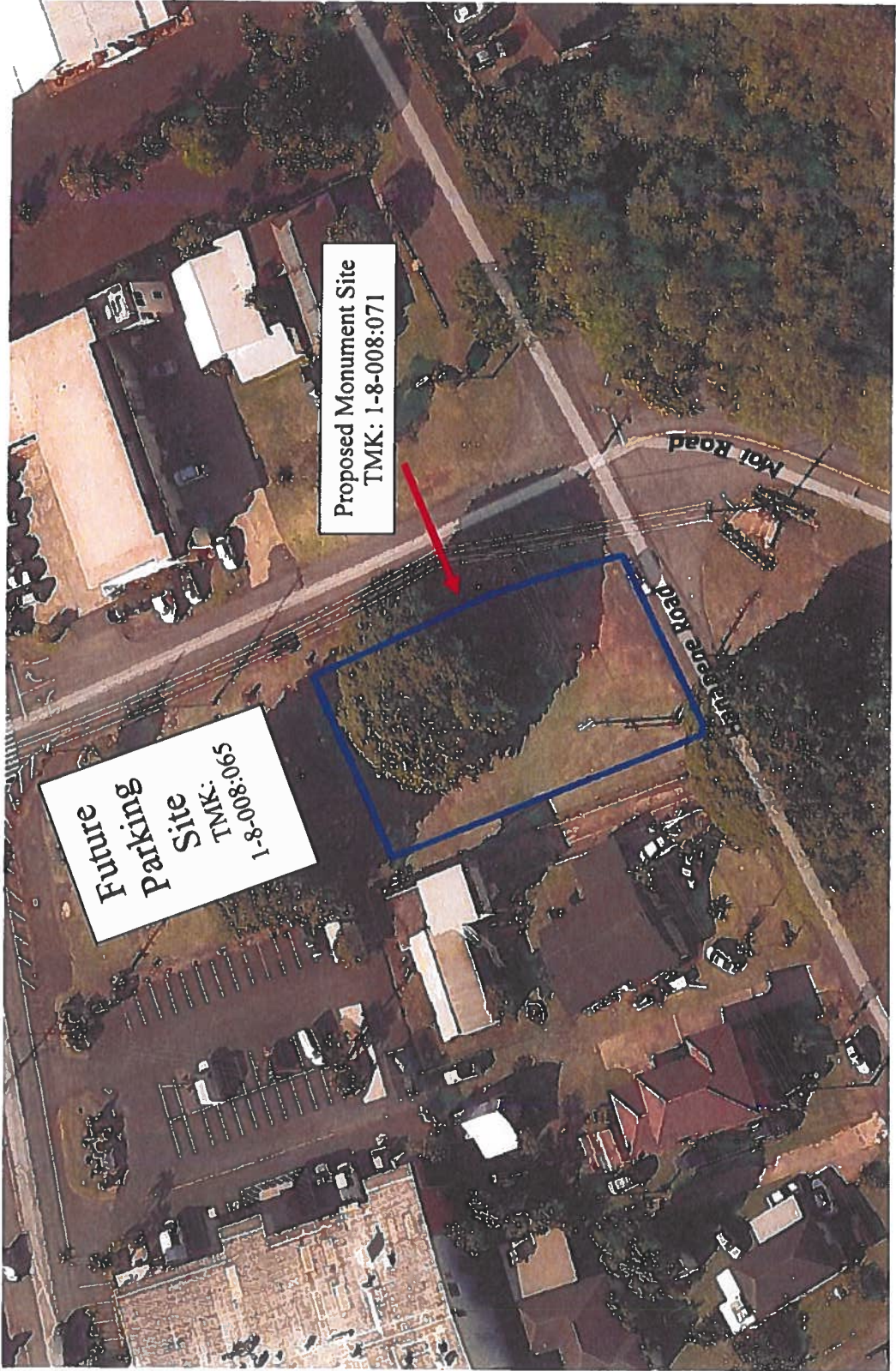


EXHIBIT “C”

