

5.3 HERITAGE RESOURCE MAPS

The General Plan's set of Heritage Resources Maps includes an island map and six district maps at a larger scale. These maps document important natural, scenic, and historic features, particularly in relation to the urban and agricultural lands that are developed or may be developed in the future, including:

- Registered Historic Sites (State/Federal)
- Cultural Features
- Priority Public Access Points
- Fishponds
- Streams & Waterbodies
- Wetlands
- Major Roads
- Planning District Boundaries
- Traditional Cultivation Areas
- Ahupua'a Boundaries
- Coral Reefs
- Scenic Corridors
- State & County Parks
- Preserves
- Reservoirs
- Regulated Fishing Areas
- Open Space Acquisition Priorities
- Sand Dunes
- Threatened & Endangered Species
- Critical Habitat

Purposes of the Heritage Resource Maps

The purposes of the Heritage Resource Maps are:

- To depict natural, cultural, and scenic resources that are important to the County of Kaua'i and that are intended to be conserved. The mapping of important landforms, streams, and other physical elements represents the general location of the resource. The mapping of historic and archaeological sites, other features, and Scenic Roadway Corridors is intended to be representational, not precise.
- To classify important landforms that shall be designated as "Natural" on the General Plan Land Use Map and shall be zoned accordingly, in order to protect steep slopes and streams from erosion and to protect landforms from development that might affect scenic views.
- To be a guide when preparing Community Plans and in preparing or revising land use ordinances and rules, including but not limited to the following: revisions to the Comprehensive Zoning Ordinance or the Zoning Maps, zone change ordinances, revisions to the Special Management Area (SMA) rules or boundaries, revisions to the Subdivision Ordinance, and the preparation of new ordinances or rules, such as a Scenic Roadway Corridor ordinance.
- To be a reference for projects undertaken with State or County lands or funds shall be designed to conserve heritage resources.
- To guide in the review of subdivision and land use permit applications, but may not be used alone to prohibit a land use that is allowed by the Comprehensive Zoning Ordinance or by permit.



Figure 5-8 Kaua'i Island Heritage Resource Map

- | | | |
|-------------------------------|----------------------------|-----------------------------------|
| Registered Historic Sites | Historic Belt Road | Preserves |
| State | Trails | Reservoirs |
| National | Kōloa Scenic Byway | Traditional Cultivation Areas |
| State & National | Planning District Boundary | Sand Dunes |
| Cultural Features | Ahupua'a Boundaries | Open Space Acquisition Priorities |
| Priority Public Access Points | Wetlands | Critical Habitat |
| Fish Ponds | Coral Reefs | Threatened & Endangered Species |
| Streams & Waterbodies | Regulated Fishing Areas | High Density |
| Major Roads | State & County Parks | Very High Density |
| Roads | | |

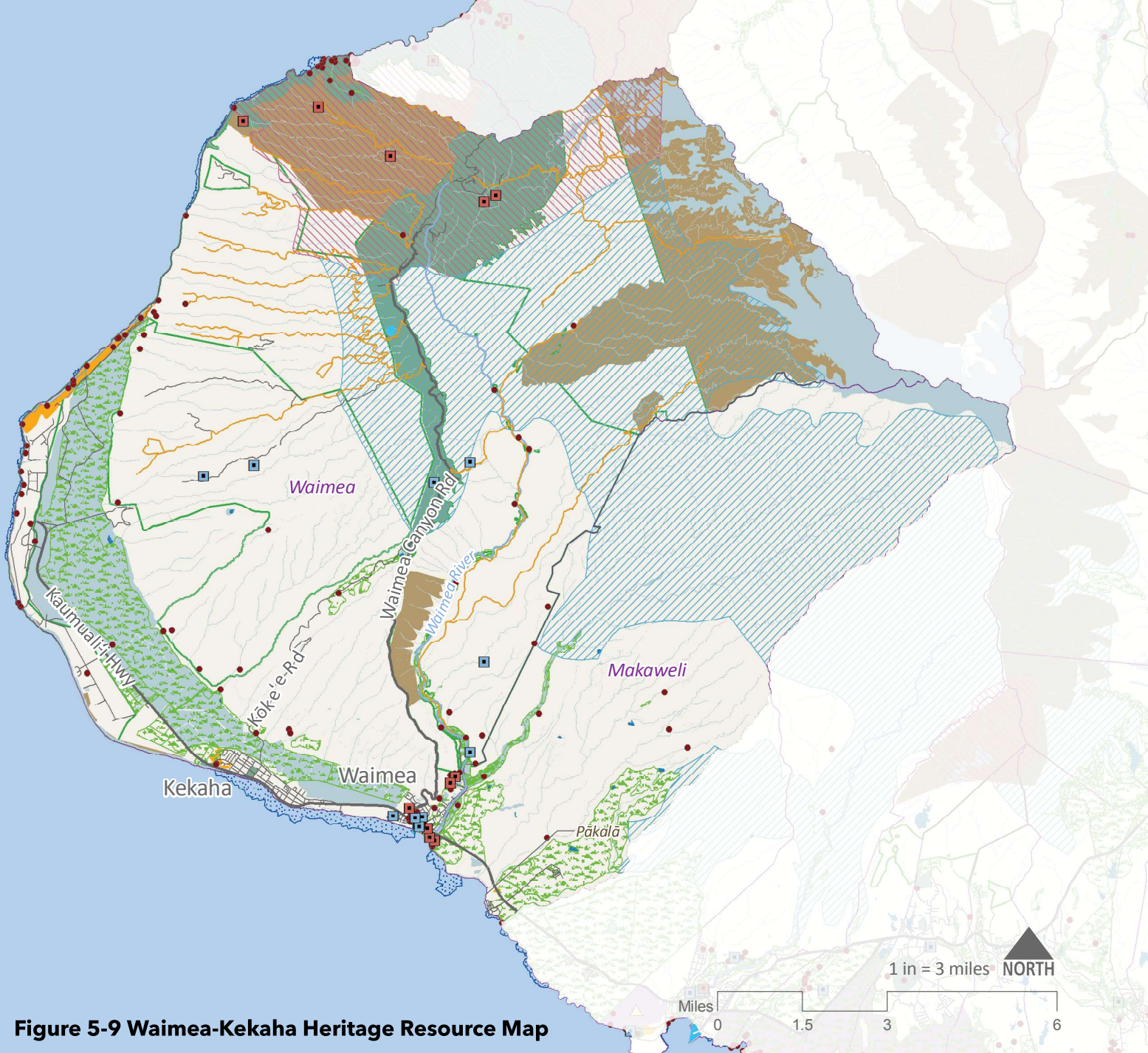


Figure 5-9 Waimea-Kekaha Heritage Resource Map

Registered Historic Sites

- State
- National
- State & National
- Cultural Features
- Priority Public Access Points
- Fish Ponds
- Streams & Waterbodies
- Major Roads
- Roads

- Trails
- Planning District Boundary
- Ahupuaʻa Boundaries
- Wetlands
- Coral Reefs
- Regulated Fishing Areas
- State & County Parks
- Preserves
- Reservoirs

- Traditional Cultivation Areas
- Sand Dunes
- Open Space Acquisition Priorities
- Critical Habitat
- Threatened & Endangered Species**
- High Density
- Very High Density

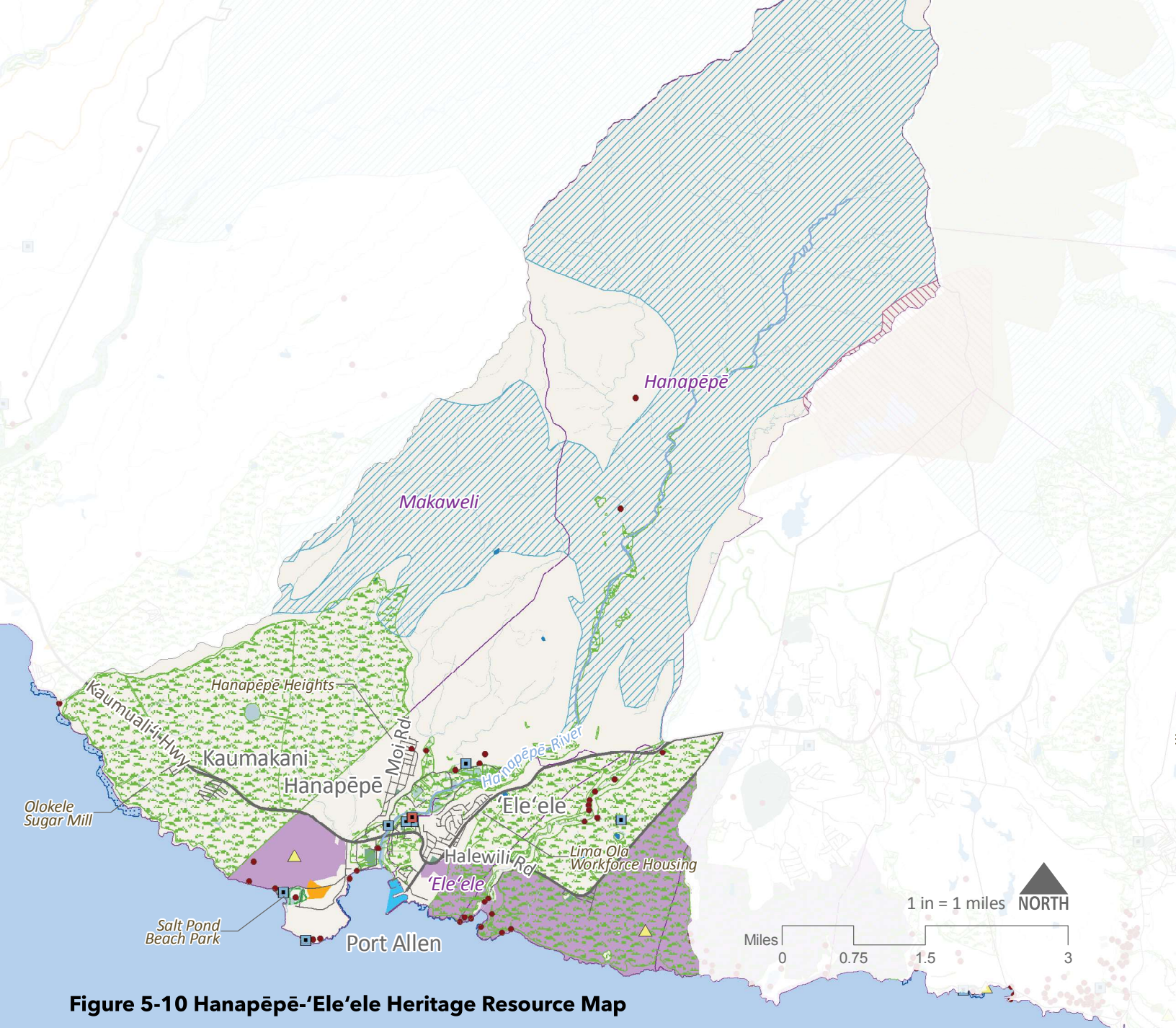


Figure 5-10 Hanapēpē-'Ele'ele Heritage Resource Map

- | | | |
|---|--|--|
| <ul style="list-style-type: none"> Registered Historic Sites State National State & National Cultural Features Priority Public Access Points Fish Ponds Streams & Waterbodies Major Roads Roads | <ul style="list-style-type: none"> Trails Planning District Boundary Ahupua'a Boundaries Wetlands Coral Reefs Regulated Fishing Areas State & County Parks Preserves Reservoirs | <ul style="list-style-type: none"> Traditional Cultivation Areas Sand Dunes Open Space Acquisition Priorities Critical Habitat Threatened & Endangered Species High Density Very High Density |
|---|--|--|

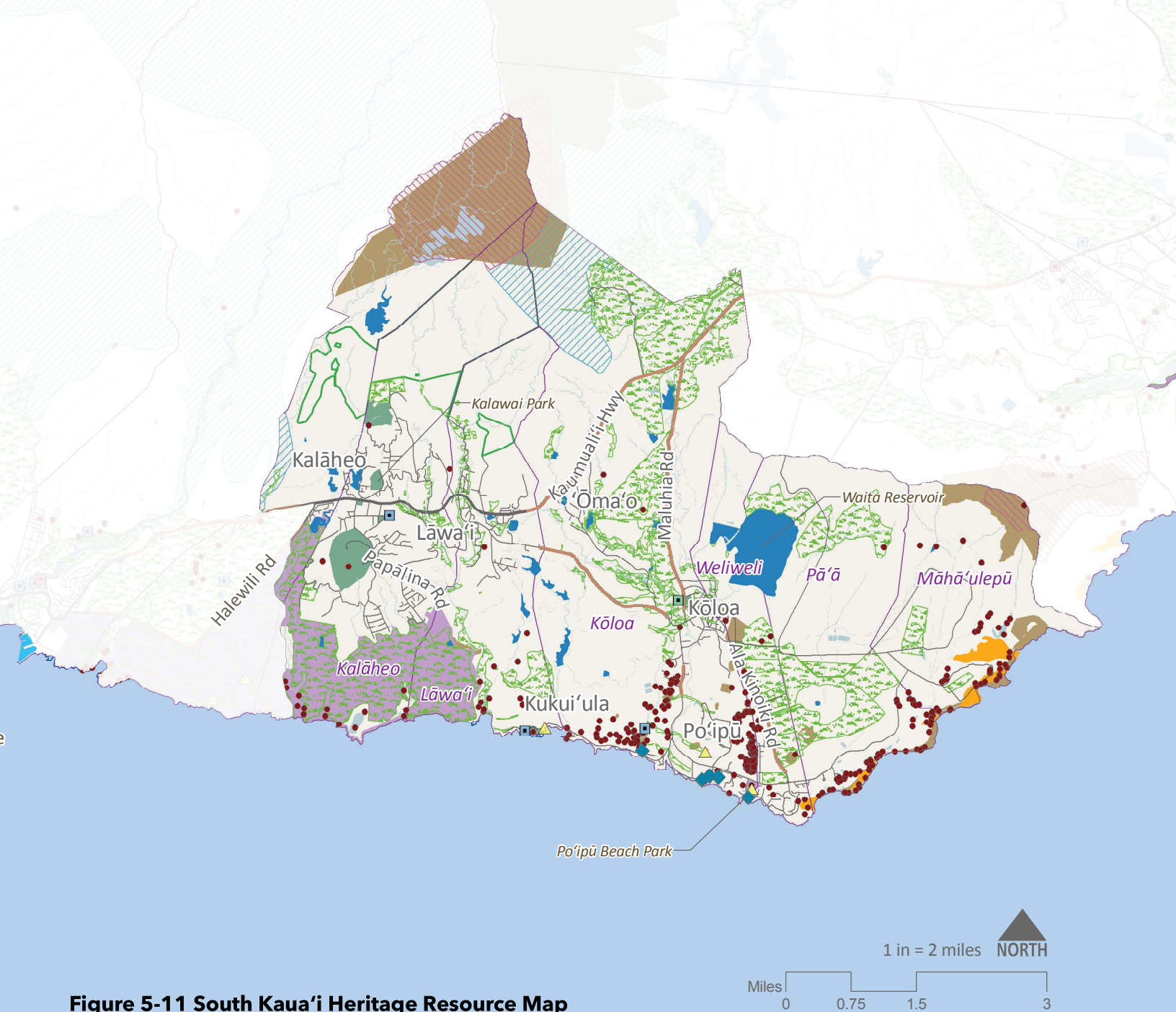


Figure 5-11 South Kaua'i Heritage Resource Map

Registered Historic Sites

- State
- National
- State & National
- Cultural Features
- ▲ Priority Public Access Points
- ◆ Fish Ponds
- Streams & Waterbodies
- Major Roads
- Roads

- Kōloa Scenic Byway
- Trails
- Planning District Boundary
- Ahupua'a Boundaries
- Wetlands
- Coral Reefs
- Regulated Fishing Areas
- State & County Parks
- Preserves

- Reservoirs
- Traditional Cultivation Areas
- Sand Dunes
- Open Space Acquisition Priorities
- Critical Habitat
- Threatened & Endangered Species
- High Density
- Very High Density

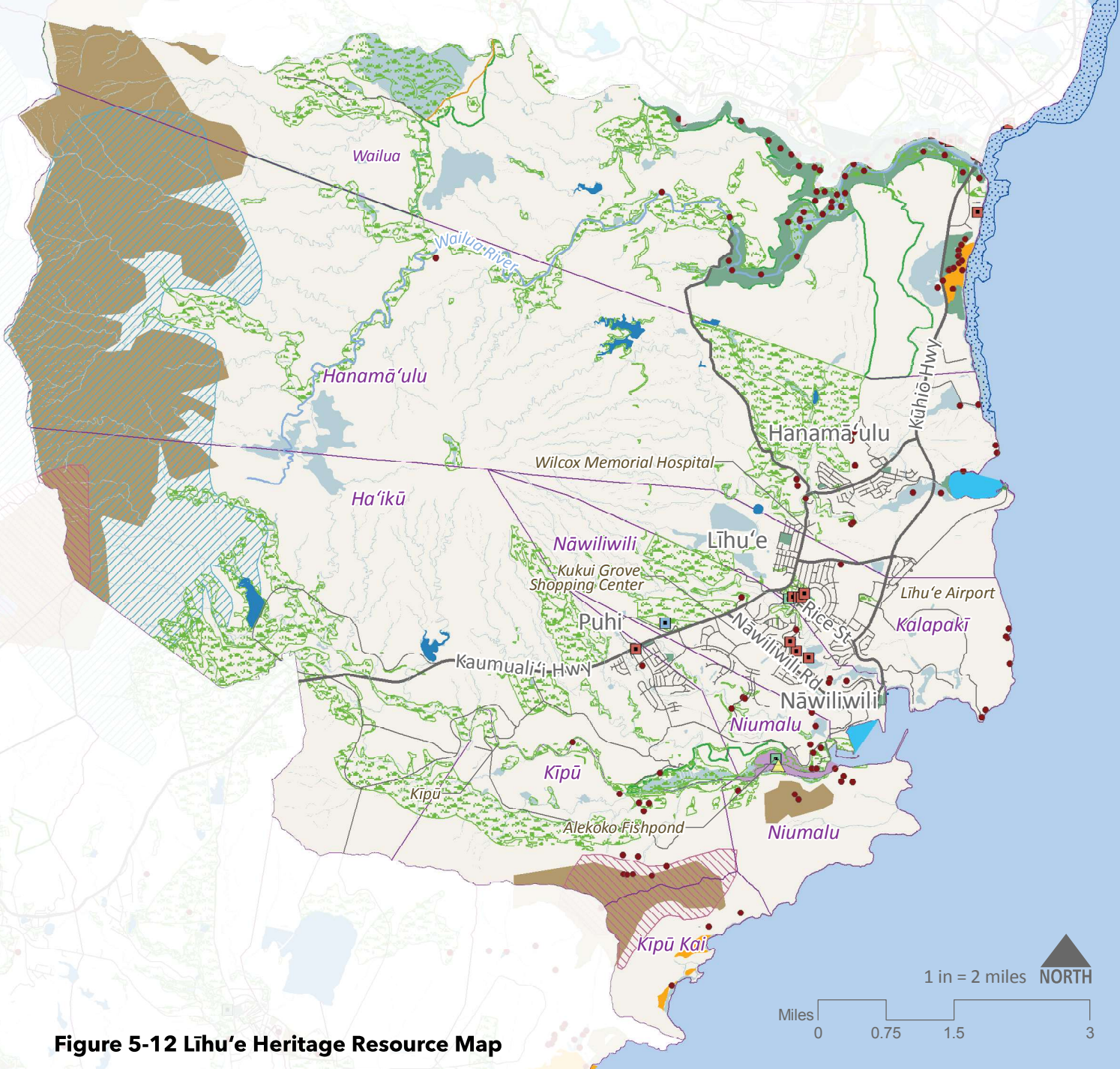


Figure 5-12 Līhu'e Heritage Resource Map

- Registered Historic Sites
 - State
 - National
 - State & National
 - Cultural Features
 - Priority Public Access Points
 - Fish Ponds
 - Streams & Waterbodies
 - Major Roads
 - Roads

- Trails
- Planning District Boundary
- Ahupua'a Boundaries
- Wetlands
- Coral Reefs
- Regulated Fishing Areas
- State & County Parks
- Preserves
- Reservoirs

- Traditional Cultivation Areas
- Sand Dunes
- Open Space Acquisition Priorities
- Critical Habitat
- Threatened & Endangered Species
 - High Density
 - Very High Density

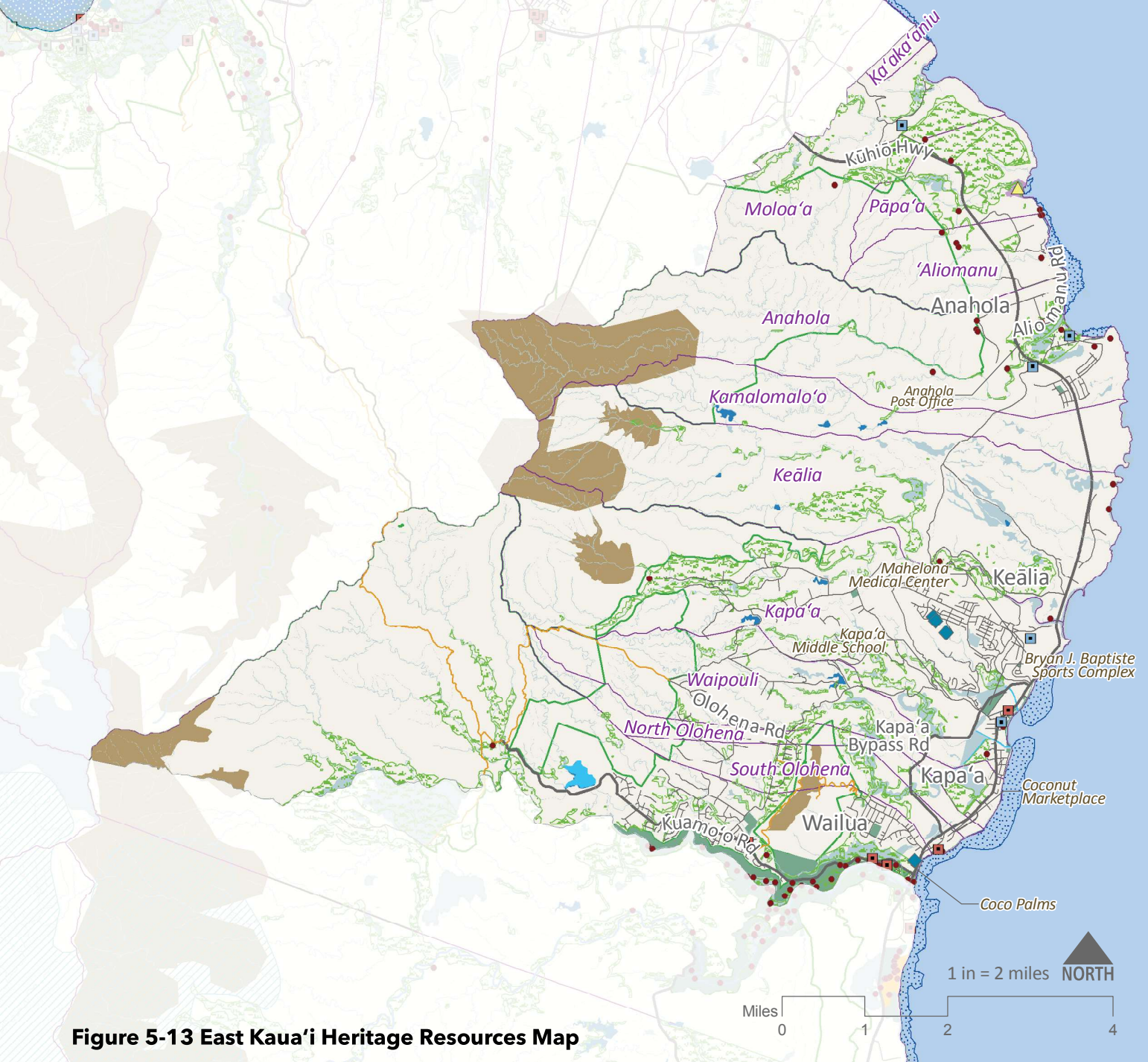


Figure 5-13 East Kaua'i Heritage Resources Map

Registered Historic Sites

- State
- National
- State & National
- Cultural Features
- ▲ Priority Public Access Points
- ◆ Fish Ponds
- Streams & Waterbodies
- Major Roads
- Roads

- Trails
- Planning District Boundaries
- Ahupua'a Boundaries
- Wetlands
- Coral Reefs
- Regulated Fishing Areas
- State & County Parks
- Preserves
- Reservoirs

- Traditional Cultivation Areas
- Sand Dunes
- Open Space Acquisition Priorities
- Critical Habitat
- Threatened & Endangered Species
- High Density
- Very High Density

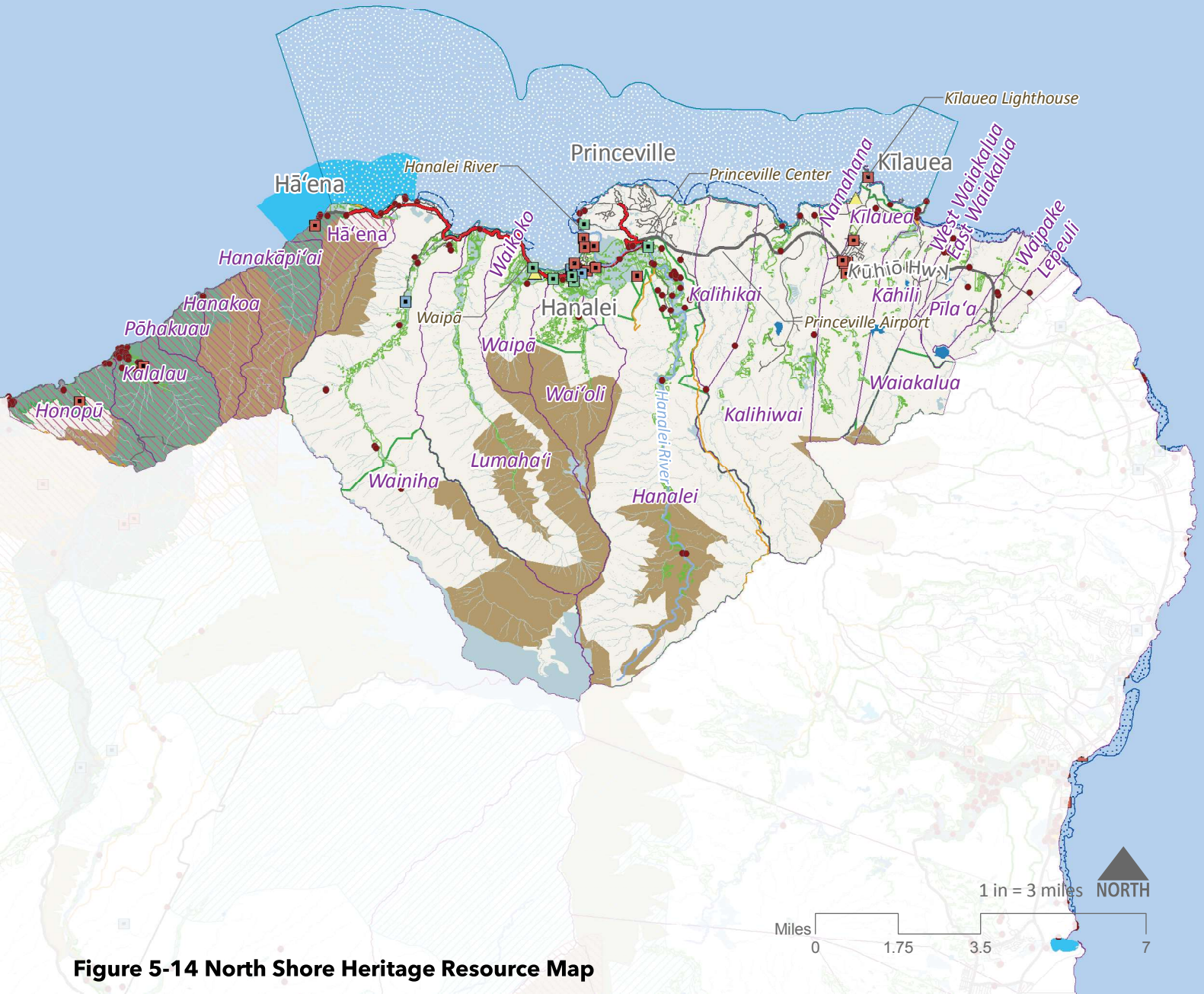


Figure 5-14 North Shore Heritage Resource Map

- | | | |
|-------------------------------|----------------------------|-----------------------------------|
| Registered Historic Sites | Historic Belt Road | Reservoirs |
| State | Trails | Traditional Cultivation Areas |
| National | Planning District Boundary | Sand Dunes |
| State & National | Ahupua'a Boundaries | Open Space Acquisition Priorities |
| Cultural Features | Wetlands | Critical Habitat |
| Priority Public Access Points | Coral Reefs | Threatened & Endangered Species |
| Fish Ponds | Regulated Fishing Areas | High Density |
| Streams & Waterbodies | State & County Parks | Very High Density |
| Major Roads | Preserves | |
| Roads | | |