

5.5 INFRASTRUCTURE MAPS

The Infrastructure Maps are a new addition to this General Plan. The maps identify the locations of existing infrastructure systems for water, wastewater, electrical power generation, and solid waste. These maps are intended to be used as a resource to guide responsible decision-making about future land use and infrastructure investments. The Infrastructure Maps should be periodically reviewed and updated as additional data becomes available.

The Infrastructure Maps include the following information:

- Solid Waste Management Facilities
- Private Water System Service Areas
- County Water System Service Areas
- Wastewater Treatment Plant
- Sewer Pump Stations
- County Wastewater System Service Areas
- Private Wastewater Service Areas
- Power Plants
- State Land Use District Urban Designated Lands
- Planning District Boundary
- Major Roads
- Roads

Purposes of the Infrastructure Maps

The purposes of the Infrastructure Maps are as follows:

- To depict existing systems for water, wastewater, electrical power generation, and solid waste. Facilities and service areas have been mapped using existing data sources and depict general locations that are intended to be representational, not precise.

- To be used as a planning tool in conjunction with other policy maps to help identify and prioritize infrastructure needs in existing and future growth areas.
- To be referenced in preparing Community Plans and in preparing or revising land use ordinances and rules, including but not limited to the following: revisions to the Comprehensive Zoning Ordinance or the Zoning Maps, zone change ordinances, revisions to the Special Management Area (SMA) rules or boundaries, revisions to the Subdivision Ordinance, and the preparation of new ordinances or rules.
- To serve as a guide in the review of subdivision and land use permit applications and to aid in determining infrastructure needs, but may not be used to prohibit a land use that is allowed by the Comprehensive Zoning Ordinance or by permit.

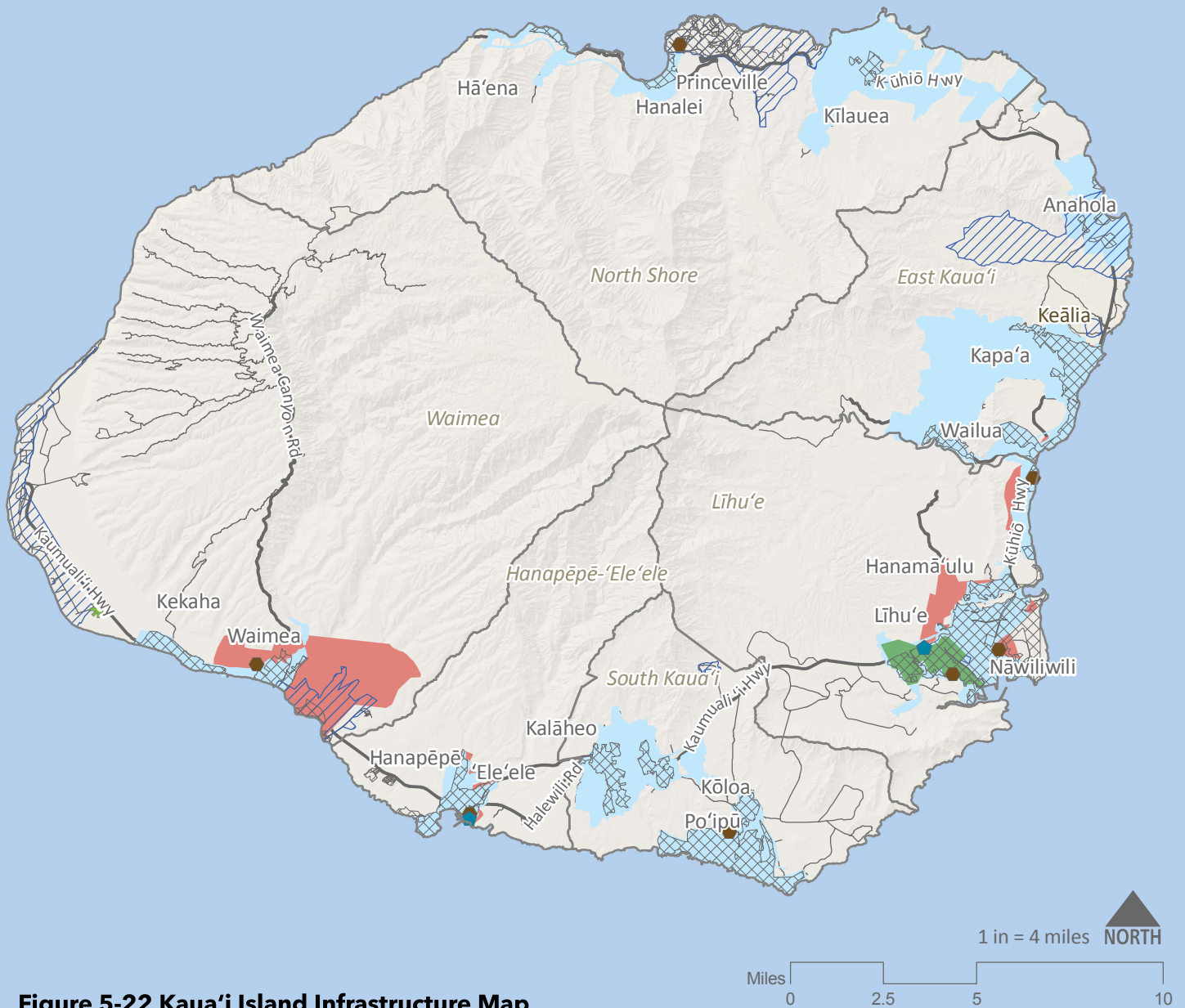


Figure 5-22 Kaua'i Island Infrastructure Map

- ✱ Landfill
- ◆ Power Plants
- Waste Water Treatment Plant
- Private Water System Service Area
- County Water System Service Area
- County Wastewater System Service Area
- Private Wastewater Service Area
- State Land Use District Urban Designated Lands
- Planning District Boundary
- Major Roads
- Roads

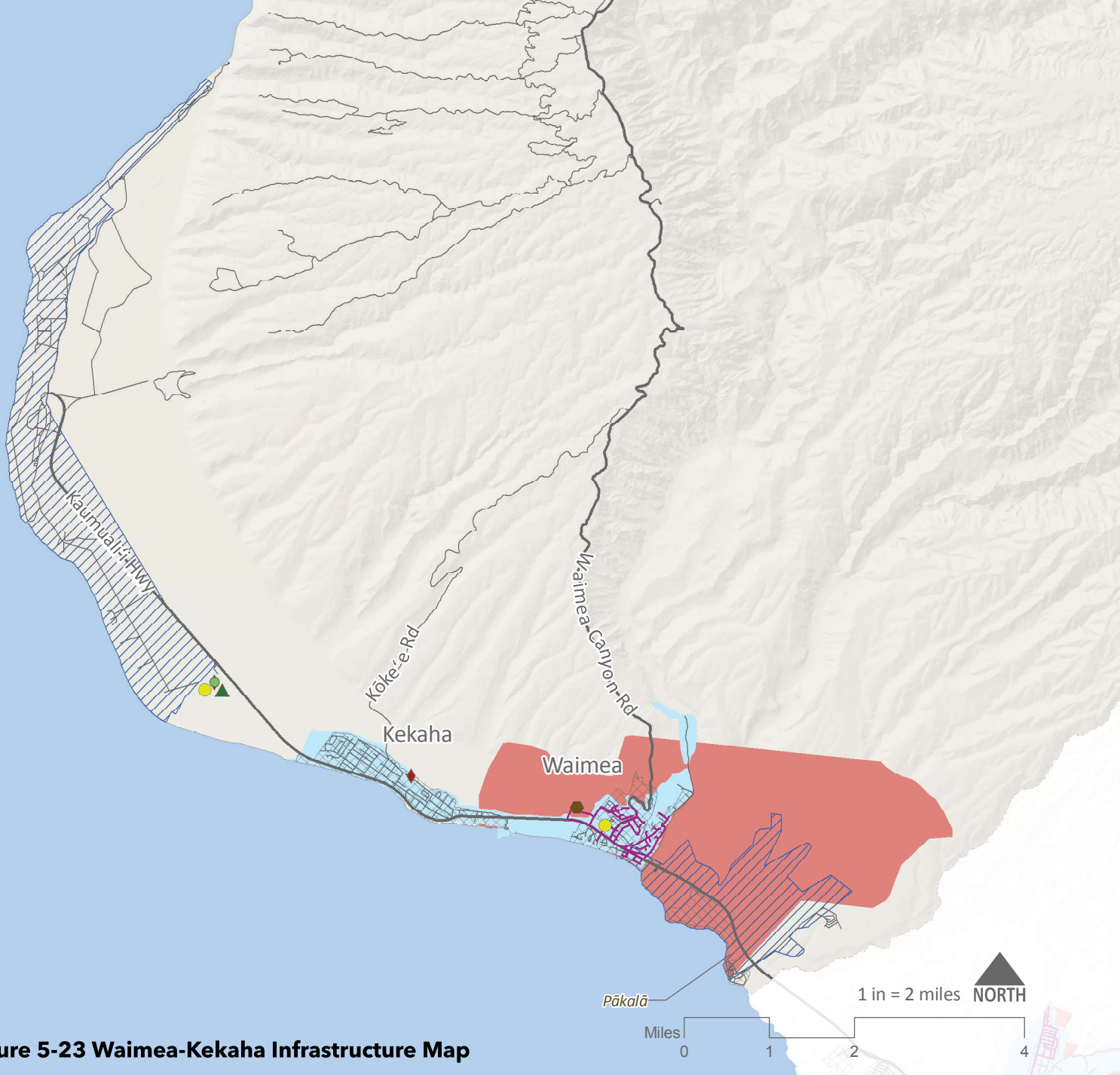


Figure 5-23 Waimea-Kekaha Infrastructure Map

Solid Waste Management Facilities

- Drop-off Recycling Center
- Refuse Transfer Station
- ▲ Green Waste Diversion Site
- ◆ Deposit Beverage Container Redemption Center

Water Facilities

- Private Water System Service Area
- County Water System Service Area

Wastewater Facilities

- Wastewater Treatment Plant
- Sewer Pump Stations
- Sewerlines
- County Wastewater System Service Area

Electric Facilities

- ◆ Power Plants
- State Land Use District Urban Designated Lands
- Planning District Boundary
- Major Roads
- Roads

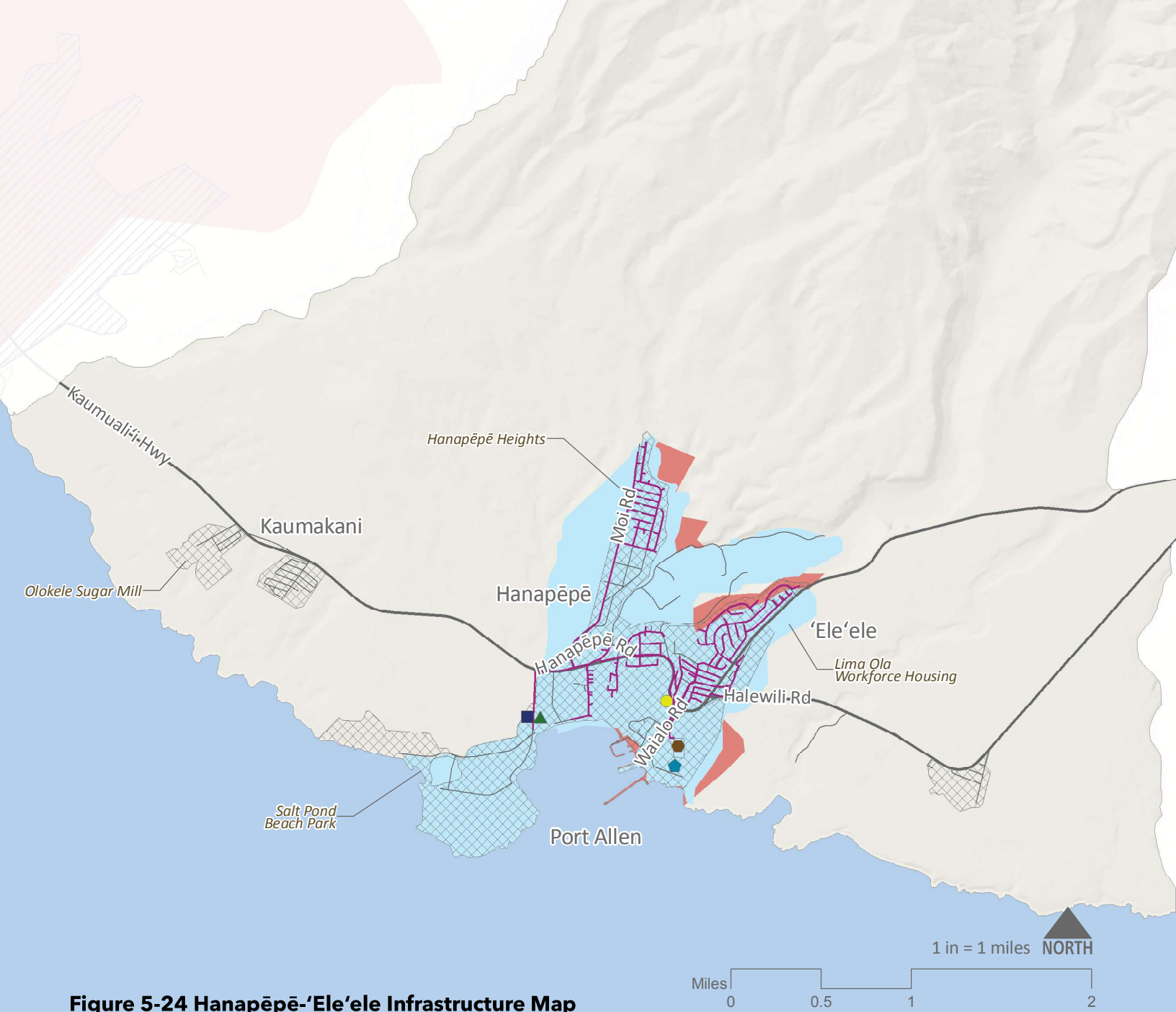


Figure 5-24 Hanapēpē-'Ele'ele Infrastructure Map

Solid Waste Management Facilities

- Drop-off Recycling Center
- Refuse Transfer Station
- ▲ Green Waste Diversion Site
- ◆ Deposit Beverage Container Redemption Center

Water Facilities

- ▨ Private Water System Service Area
- ▭ County Water System Service Area

Wastewater Facilities

- Wastewater Treatment Plant
- Sewer Pump Stations
- Sewerlines
- ▭ County Wastewater System Service Area

Electric Facilities

- ◆ Power Plants
- ▨ State Land Use District Urban Designated Lands
- ▭ Planning District Boundary
- Major Roads
- Roads

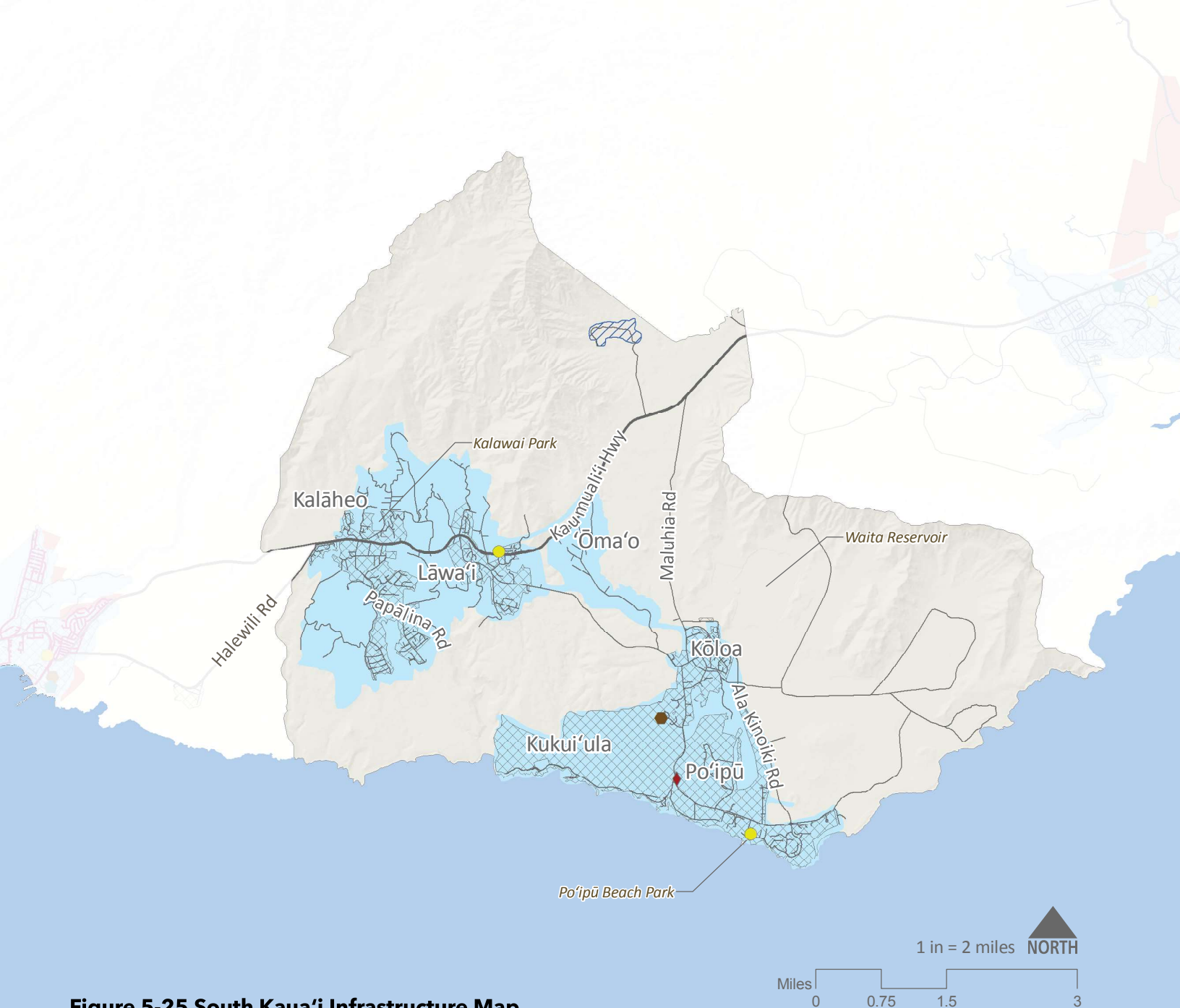


Figure 5-25 South Kauai Infrastructure Map

Solid Waste Management Facilities

- Drop-off Recycling Center
- Refuse Transfer Station
- ▲ Green Waste Diversion Site
- ◆ Deposit Beverage Container Redemption Center

Water Facilities

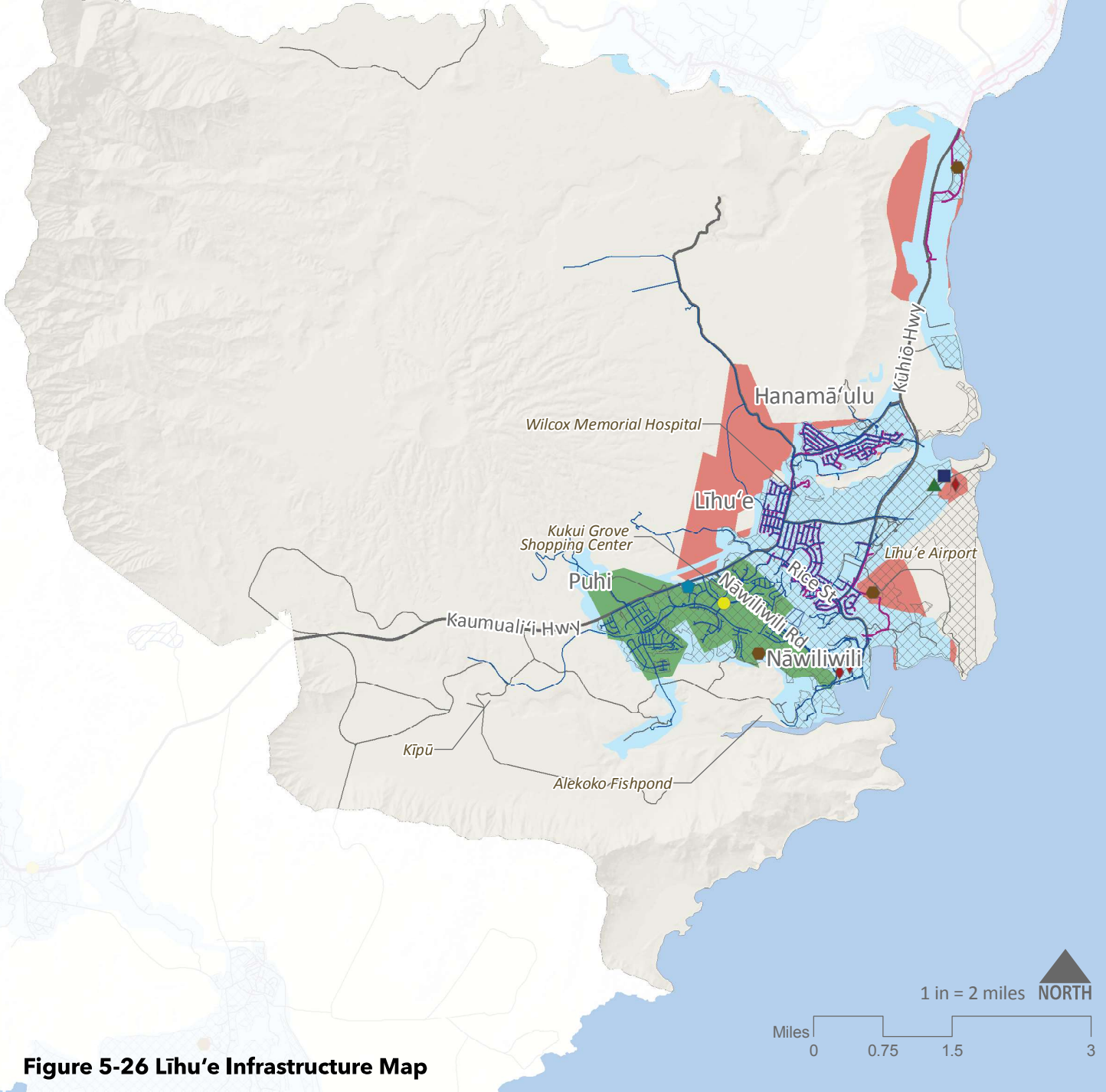
- ▨ Private Water System Service Area
- County Water System Service Area

Wastewater Facilities

- Wastewater Treatment Plant
- Sewer Pump Stations
- Sewerlines
- County Wastewater System Service Area

Electric Facilities

- ◆ Power Plants
- ▨ State Land Use District Urban Designated Lands
- Planning District Boundary
- Major Roads
- Roads



- Solid Waste Management Facilities**
- Drop-off Recycling Center
 - Refuse Transfer Station
 - ▲ Green Waste Diversion Site
 - ◆ Deposit Beverage Container Redemption Center

- Water Facilities**
- ▨ Private Water System Service Area
 - ▭ County Water System Service Area

- Wastewater Facilities**
- Wastewater Treatment Plant
 - Sewer Pump Stations
 - Sewerlines
 - ▭ County Wastewater System Service Area

- Electric Facilities**
- ◆ Power Plants
 - ▨ State Land Use District Urban Designated Lands
 - ▭ Planning District Boundary
 - Major Roads
 - Roads

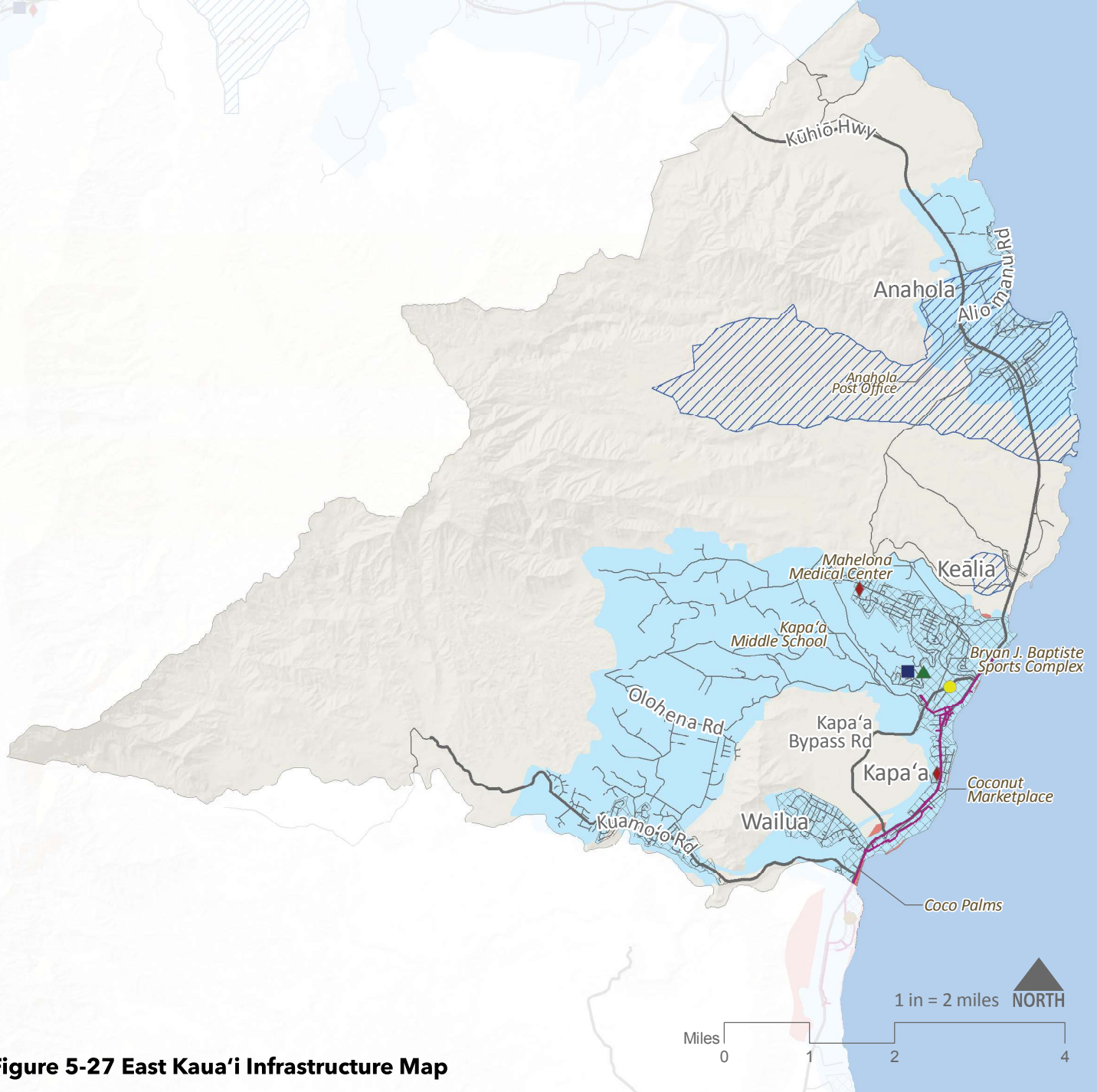


Figure 5-27 East Kauaʻi Infrastructure Map

Solid Waste Management Facilities

- Drop-off Recycling Center
- Refuse Transfer Station
- ▲ Green Waste Diversion Site
- ◆ Deposit Beverage Container Redemption Center

Water Facilities

- ▨ Private Water System Service Area
- County Water System Service Area

Wastewater Facilities

- Wastewater Treatment Plant
- Sewer Pump Stations
- Sewerlines
- County Wastewater System Service Area

Electric Facilities

- ◆ Power Plants
- ▨ State Land Use District Urban Designated Lands
- ▭ Planning District Boundary
- Major Roads
- Roads

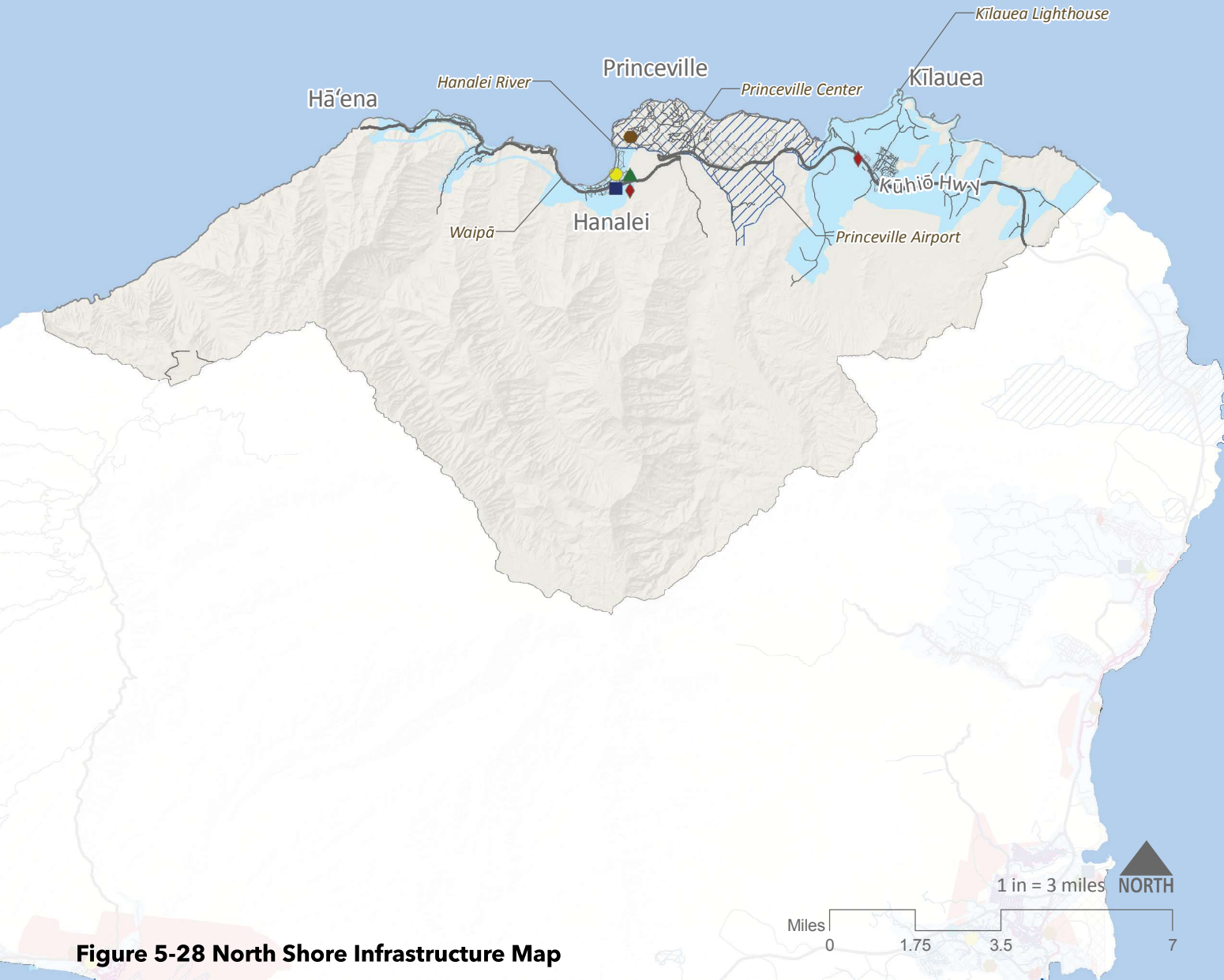


Figure 5-28 North Shore Infrastructure Map

Solid Waste Management Facilities

- Drop-off Recycling Center
- Refuse Transfer Station
- ▲ Green Waste Diversion Site
- ◆ Deposit Beverage Container Redemption Center

Water Facilities

- ▨ Private Water System Service Area
- County Water System Service Area

Wastewater Facilities

- Wastewater Treatment Plant
- Sewer Pump Stations
- Sewerlines
- County Wastewater System Service Area

Electric Facilities

- ◆ Power Plants
- ▨ State Land Use District Urban Designated Lands
- Planning District Boundary
- Major Roads
- Roads