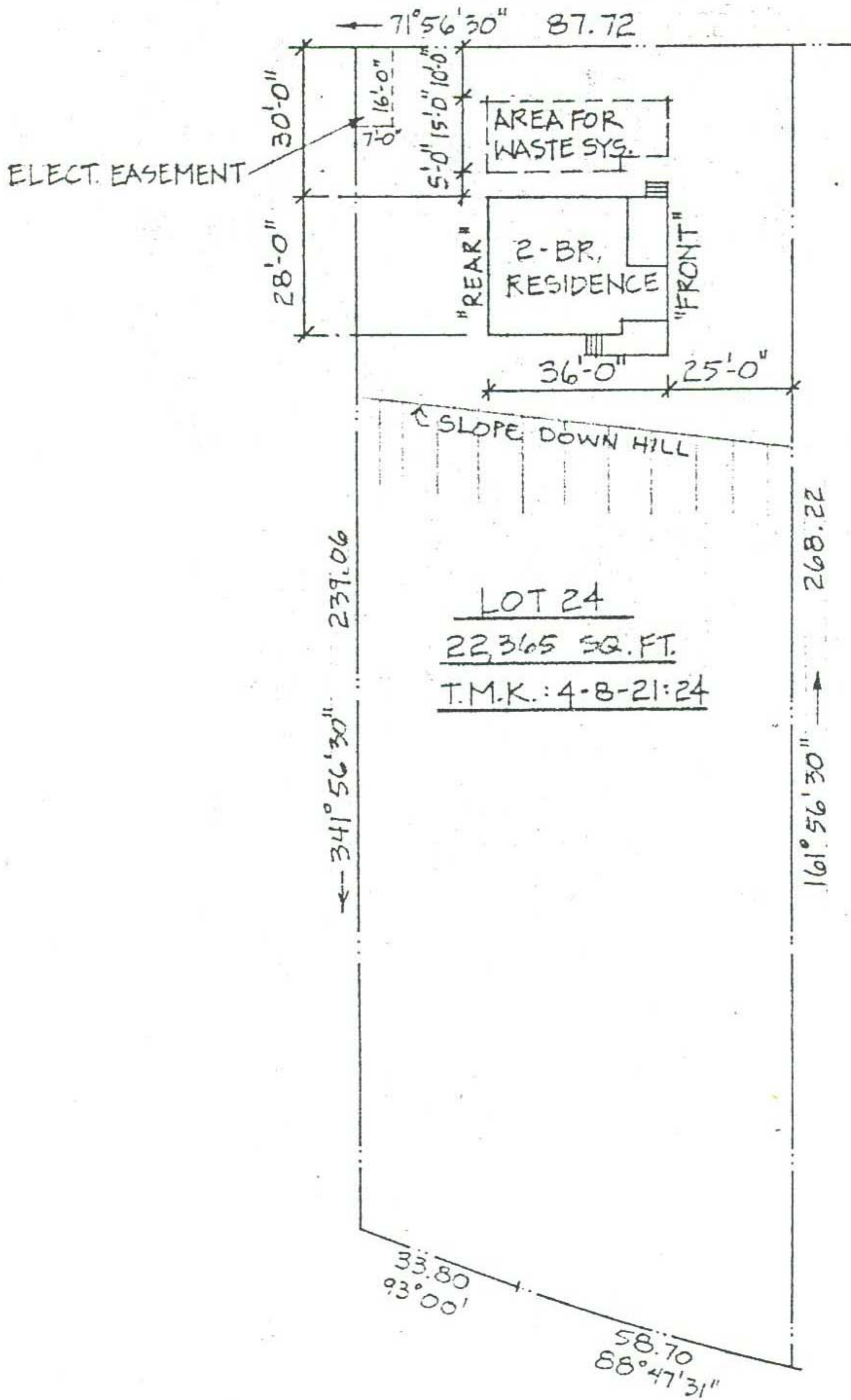


Building Permit Requirements

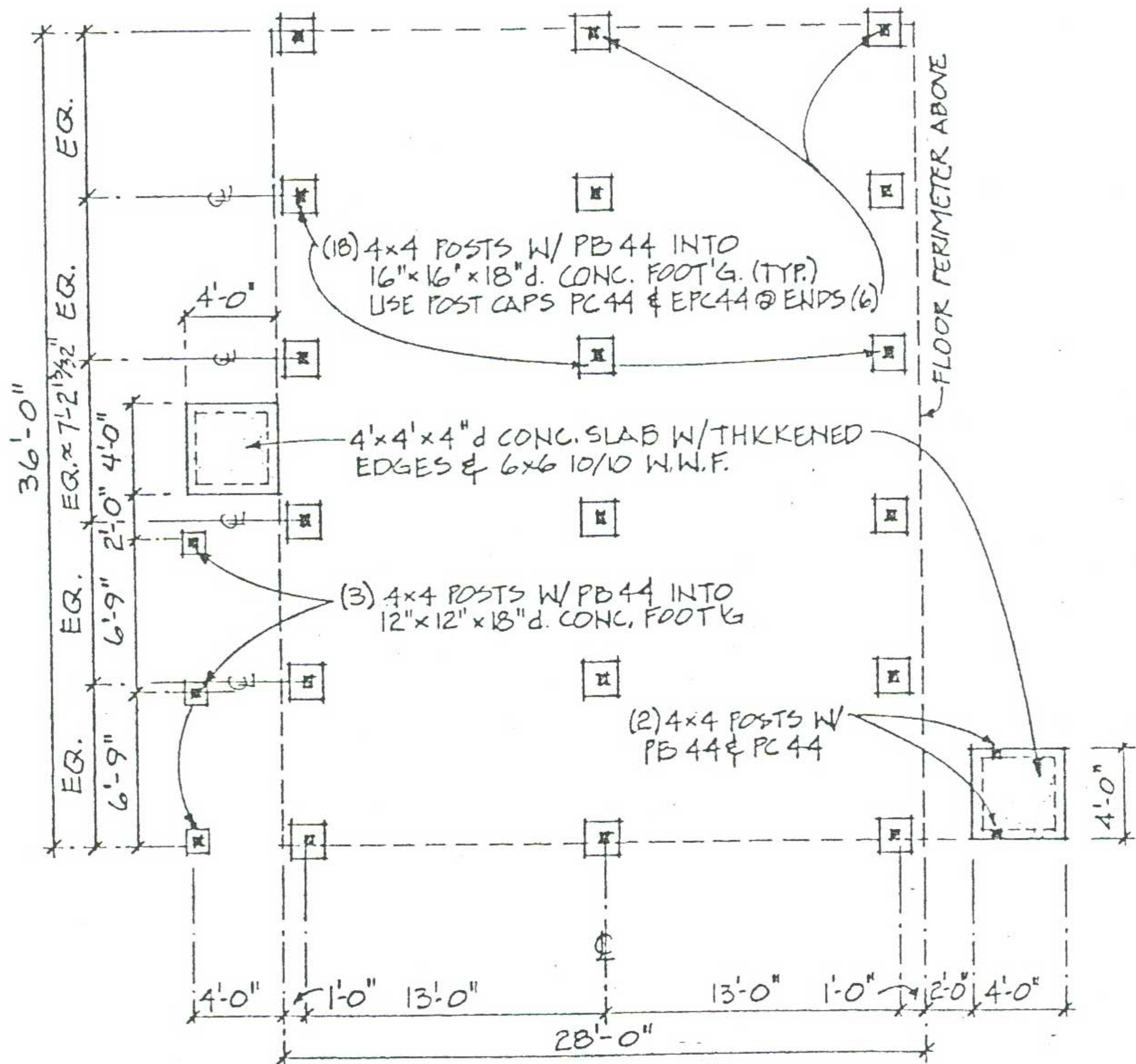
Appendix

MALAMA AINA PLACE



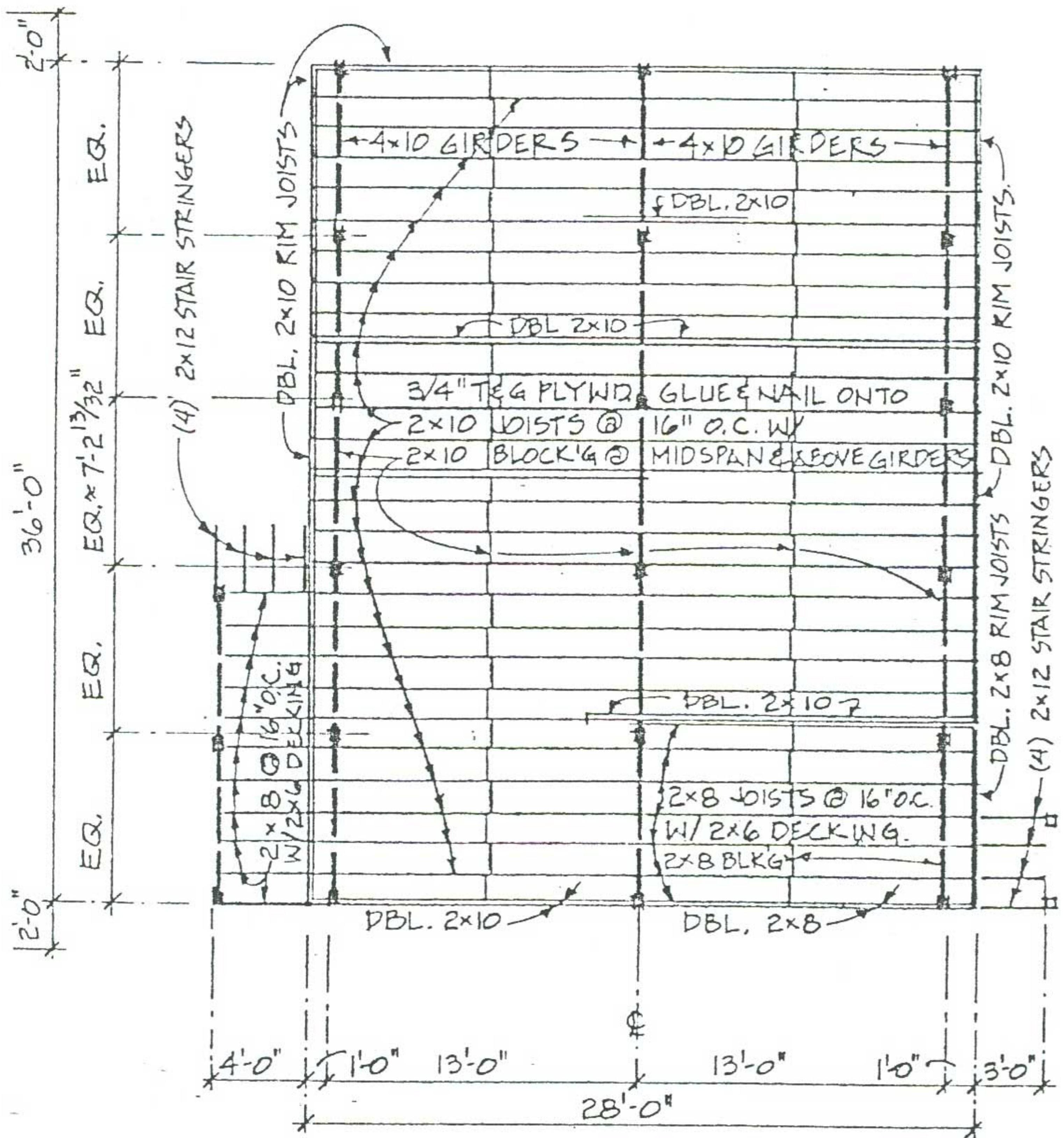
PLOT PLAN

1"=40'



FOUNDATION PLAN

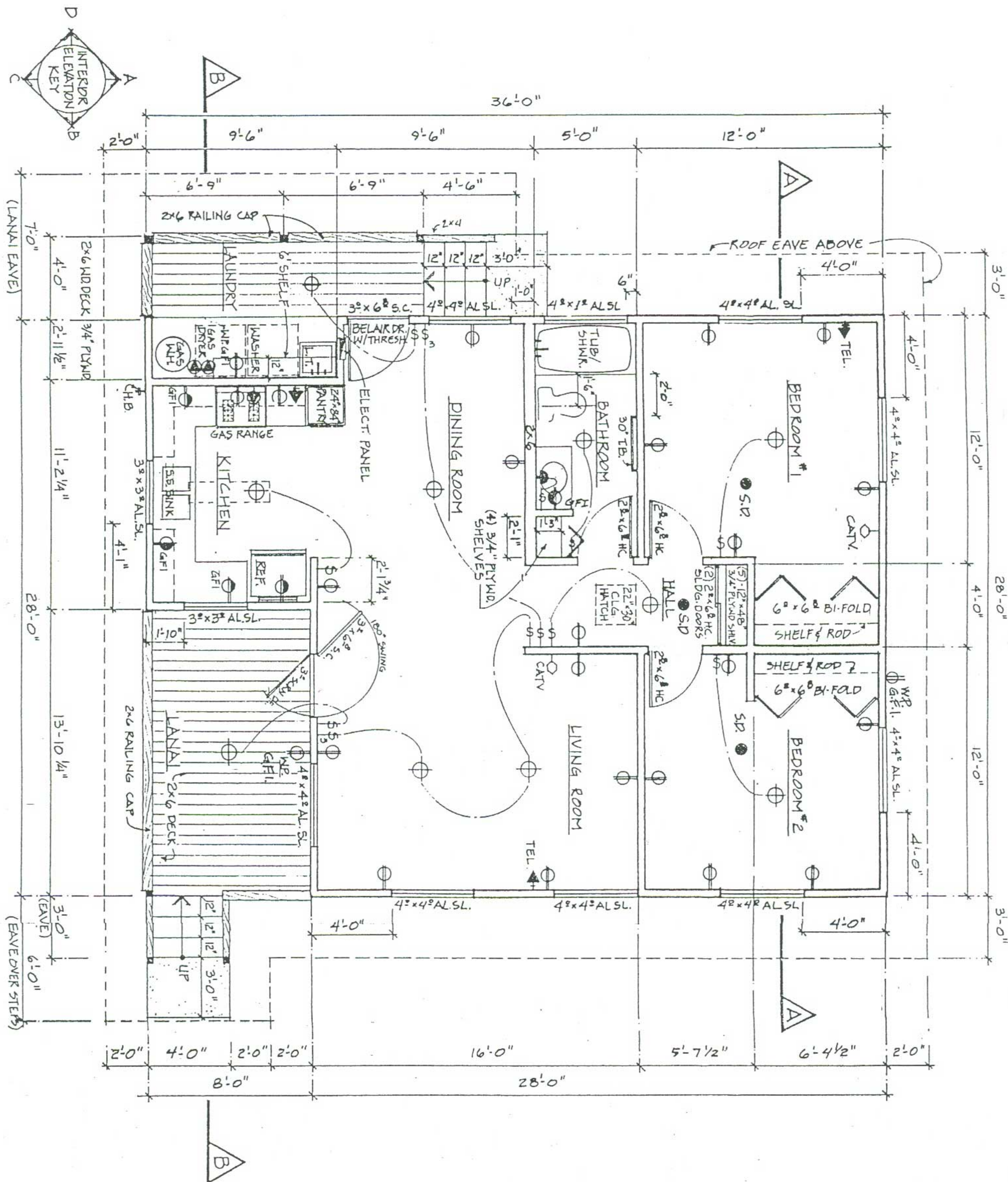
$1/8" = 1'-0"$

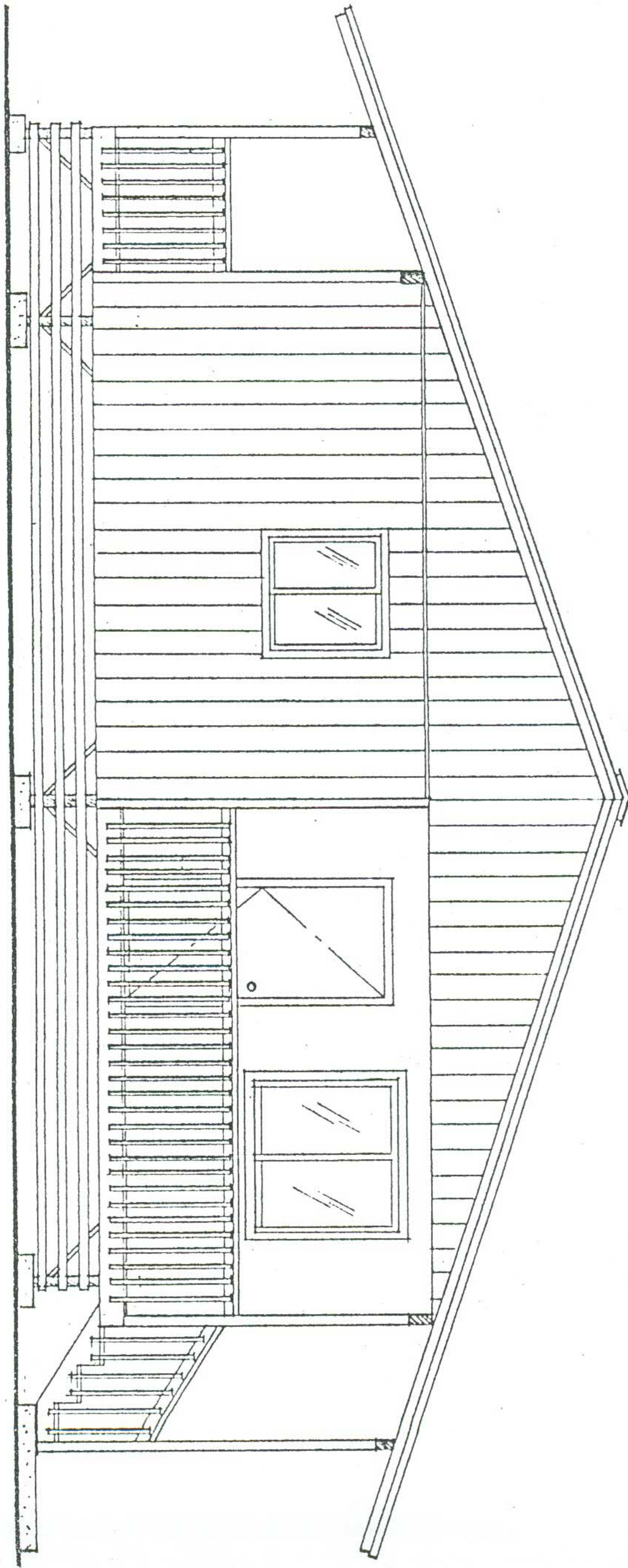


FLOOR FRAMING PLAN
 1/8" = 1'-0"

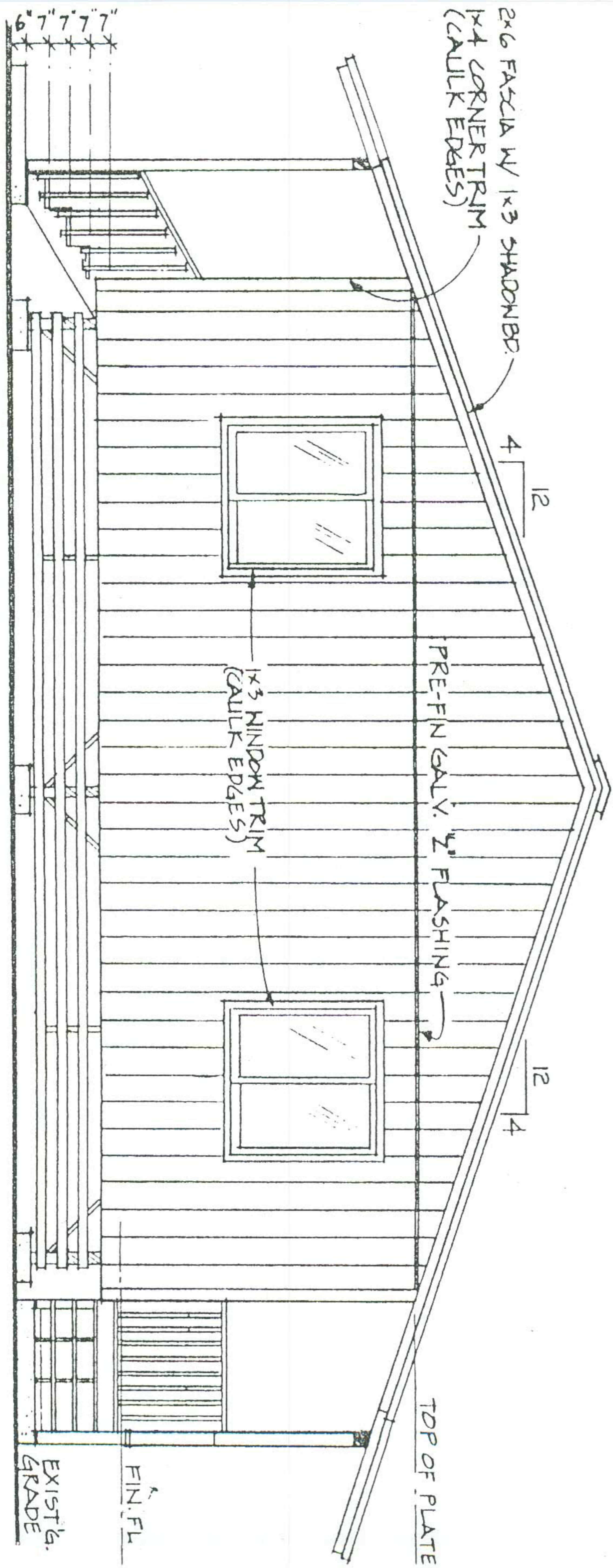
FLOOR PLAN

1/4" = 1'-0"





FRONT ELEVATION
1/4" = 1'-0"



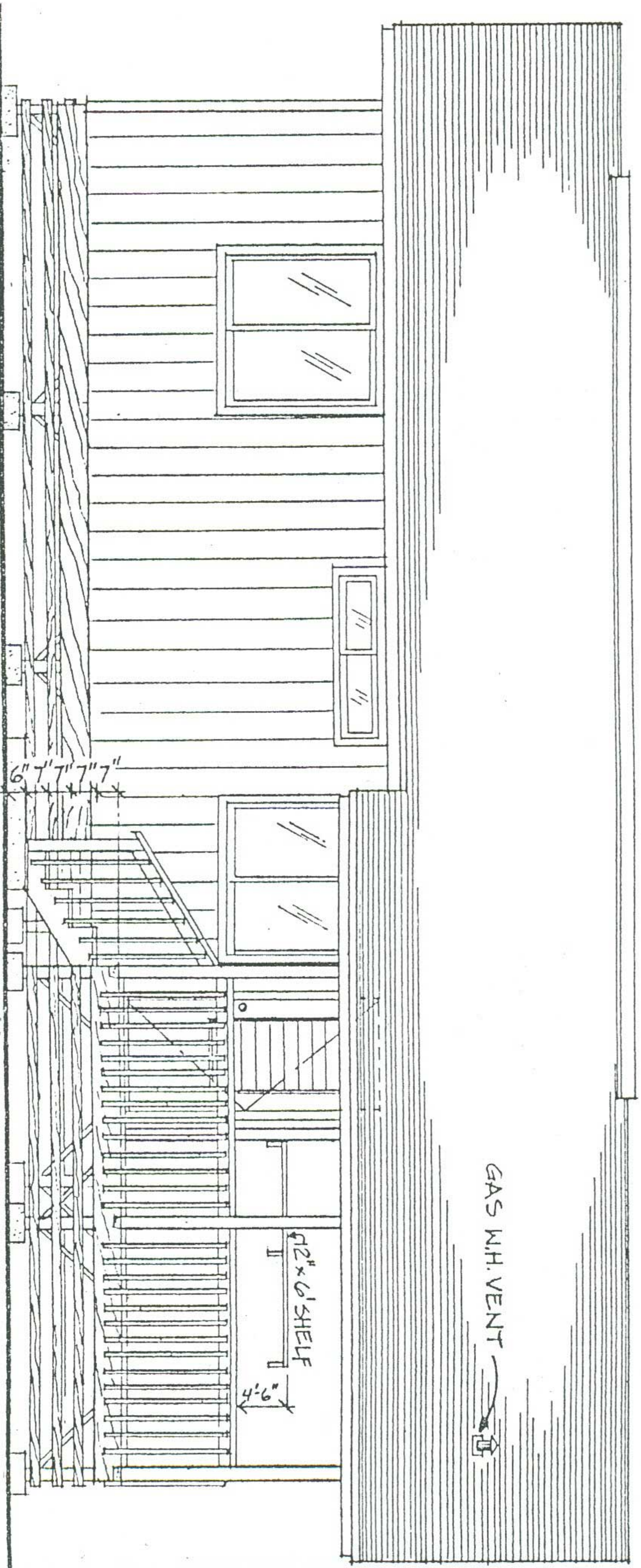
REAR ELEVATION

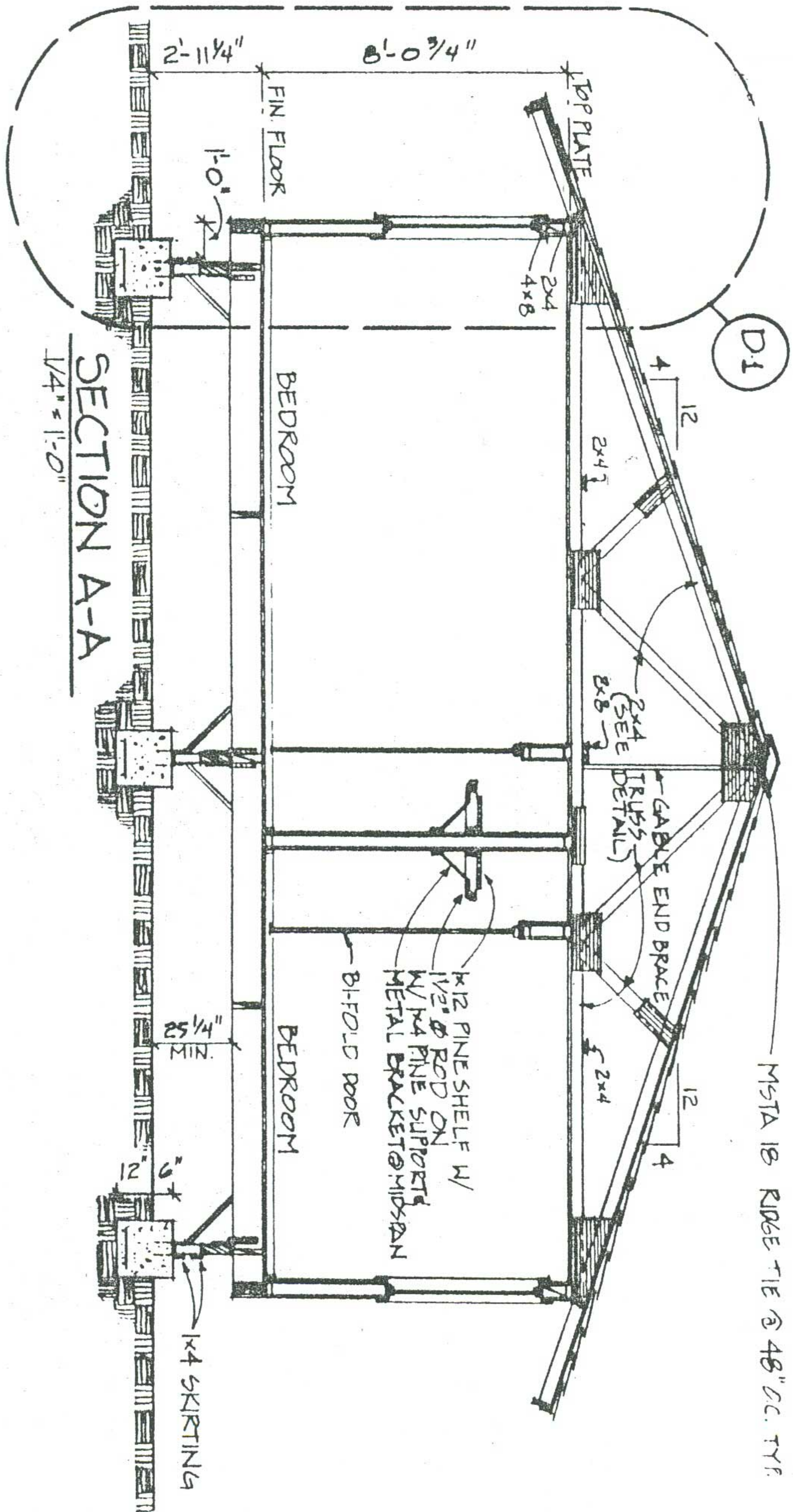
1/4" = 1'-0"

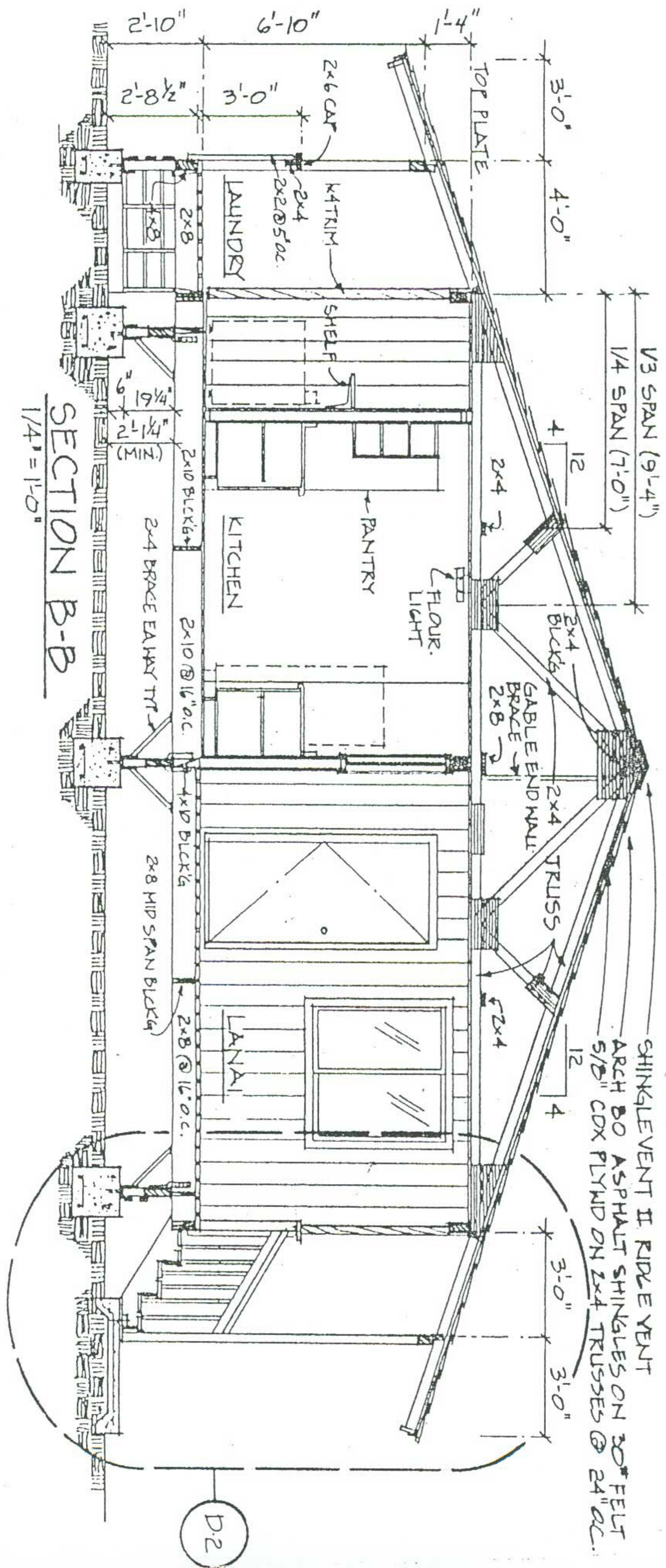


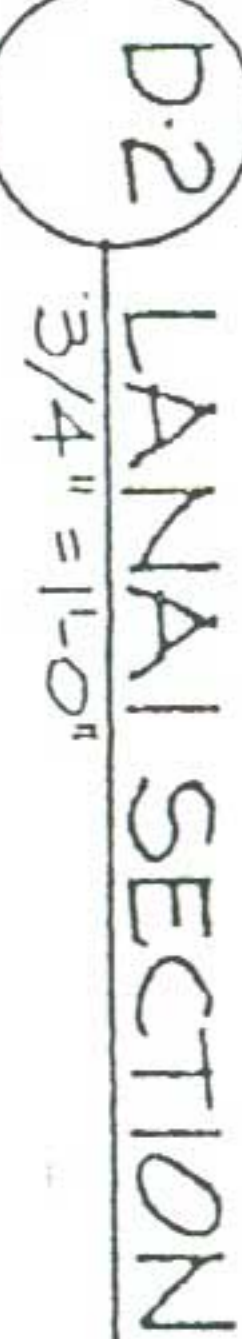
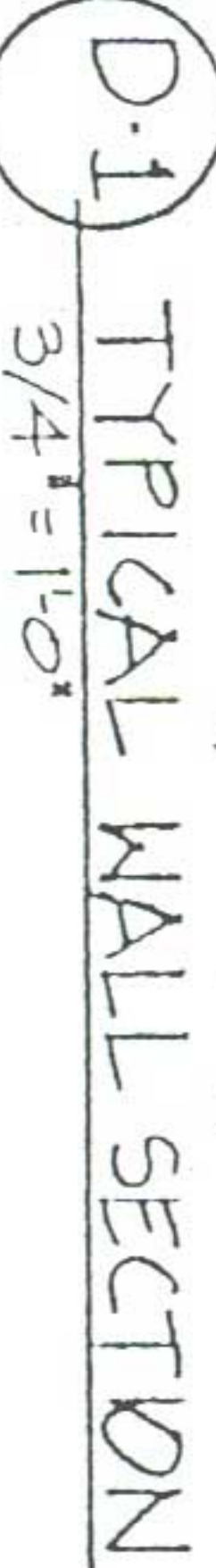
RIGHT SIDE ELEVATION
14" = 1'-0"

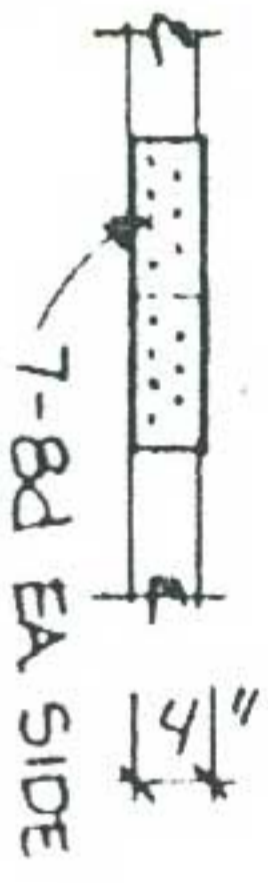
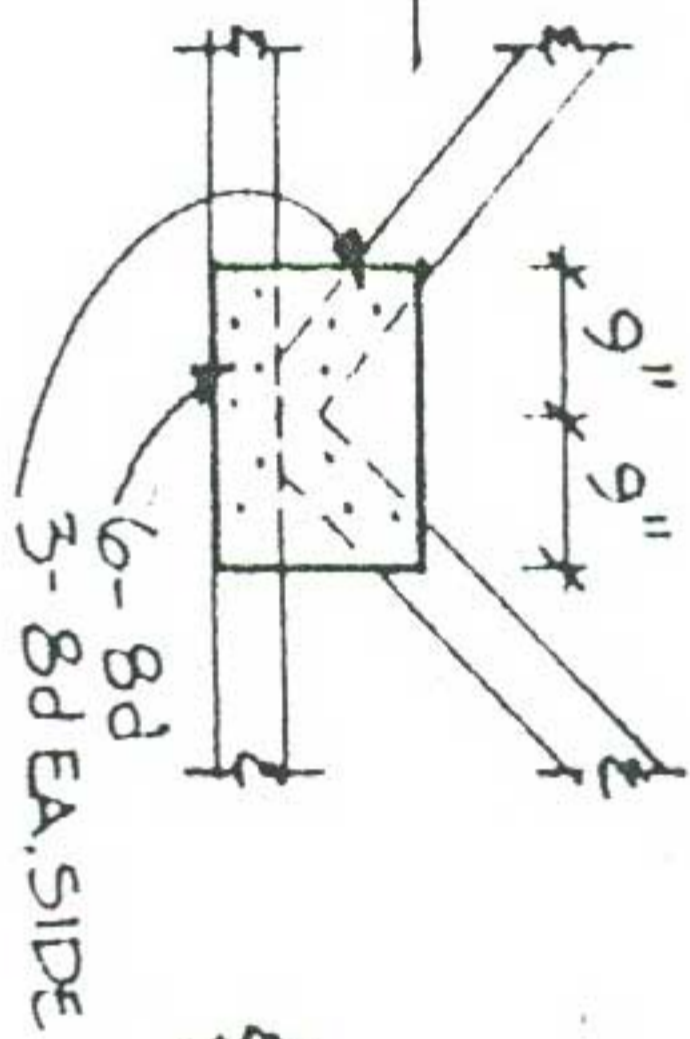
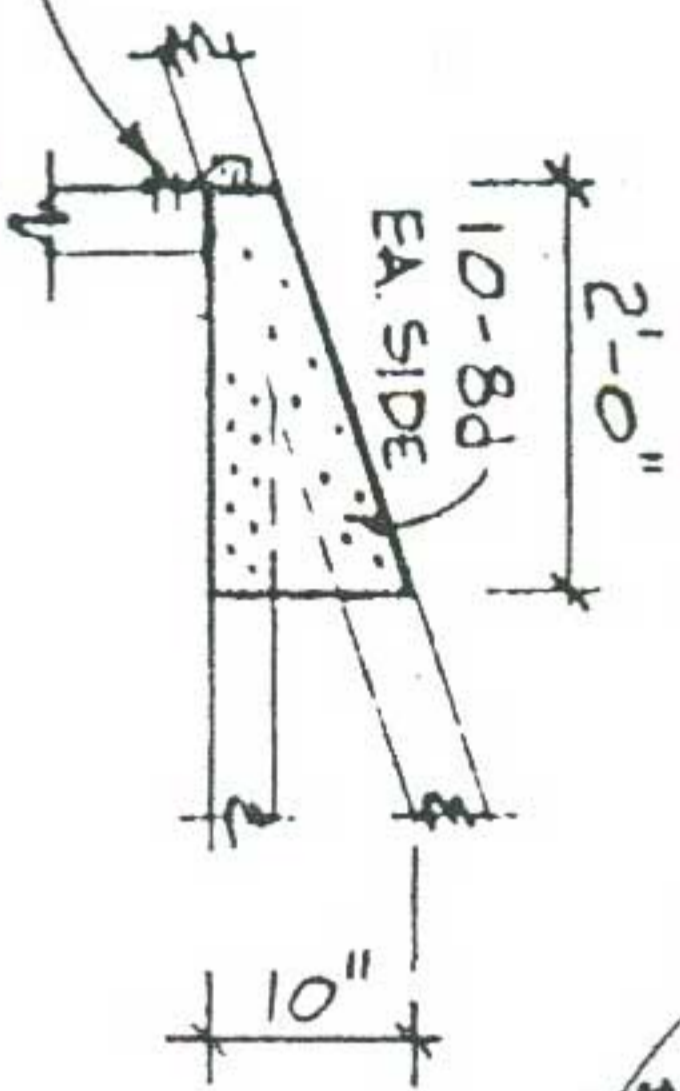
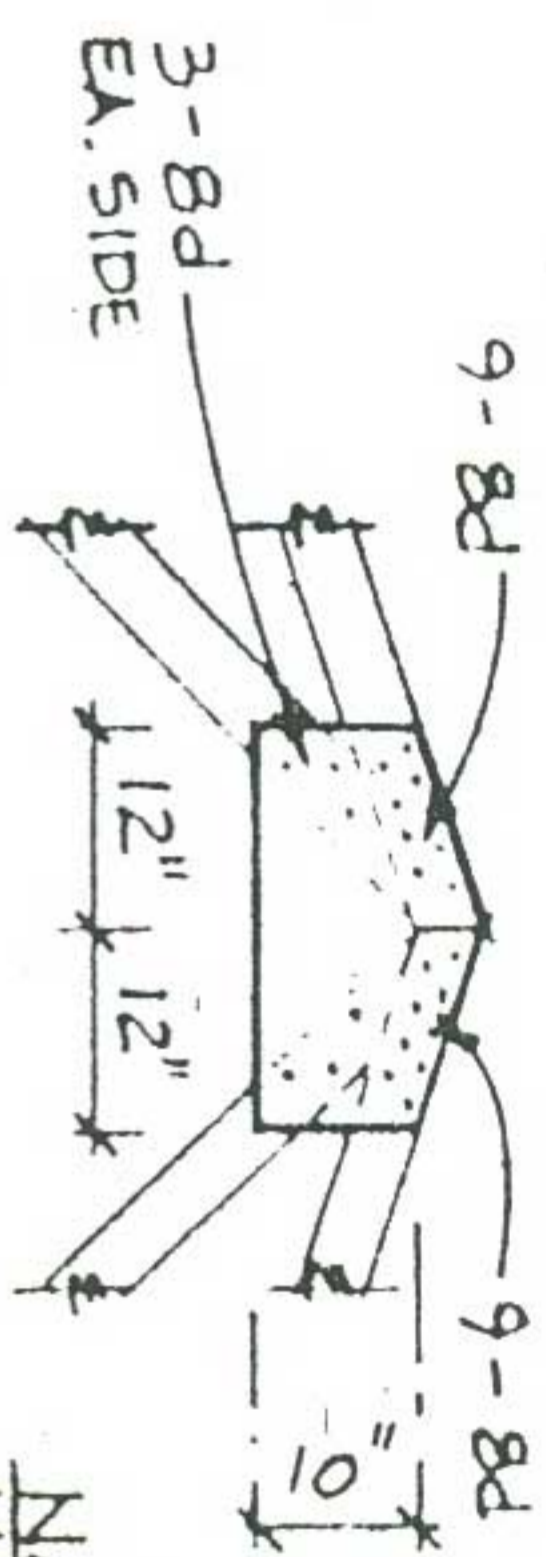
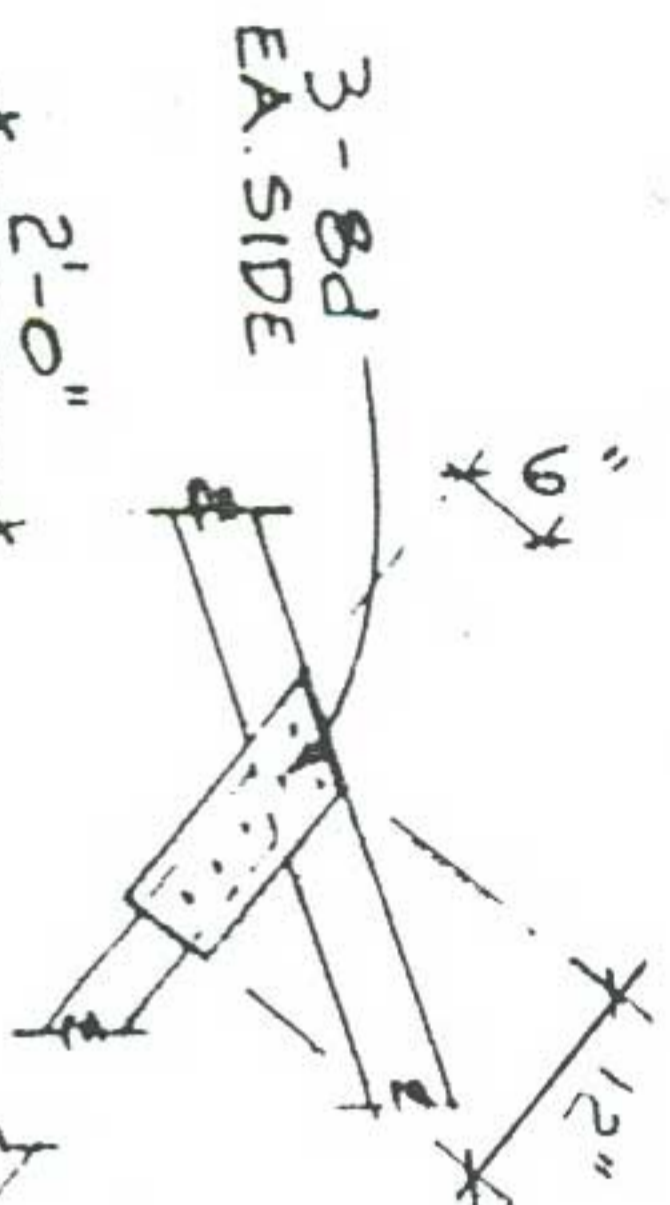
LEFT SIDE ELEVATION
14" = 1'-0"











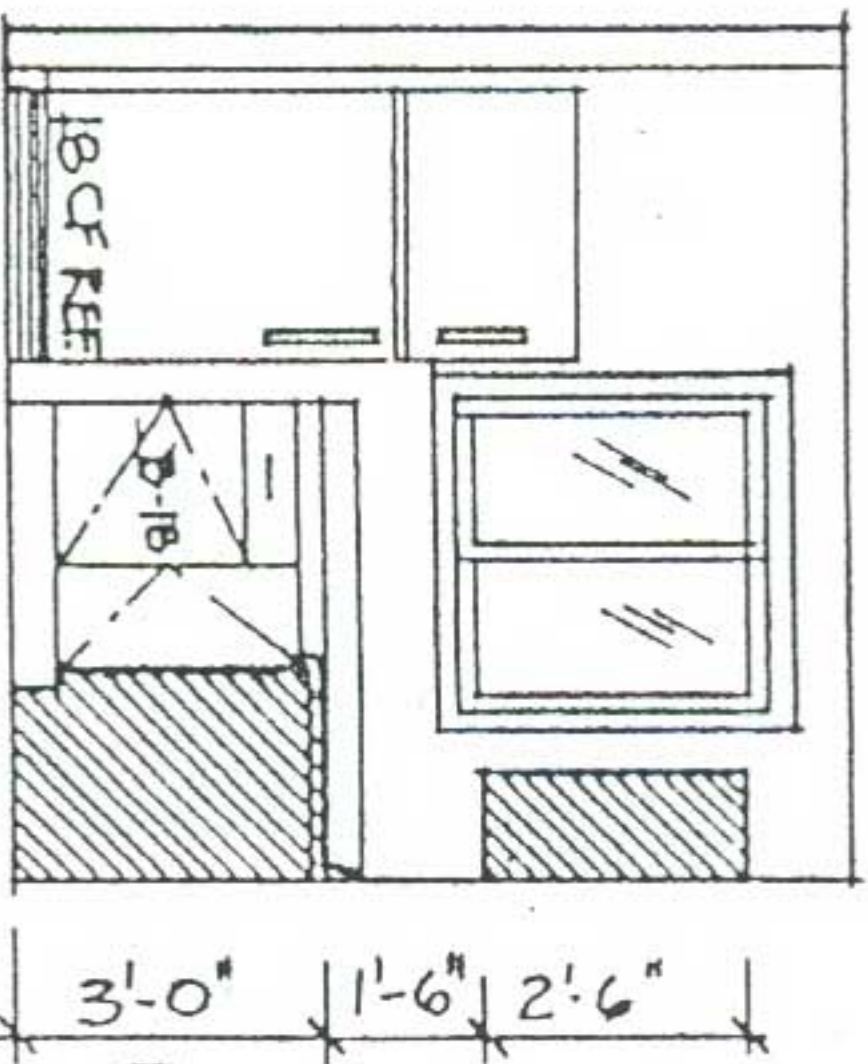
NOTE:
USE 1/2" PLYWD. GUSSET
BOTH SIDES OF TRUSS.
ALL NAILS TO BE NO LESS
THAN 7/8" FROM EDGE OF 2x4

EA. TRUSS
TIED TO TOP PLATE
W/ H2 OR H2.5
WHEN INSTALLED
ON WALL

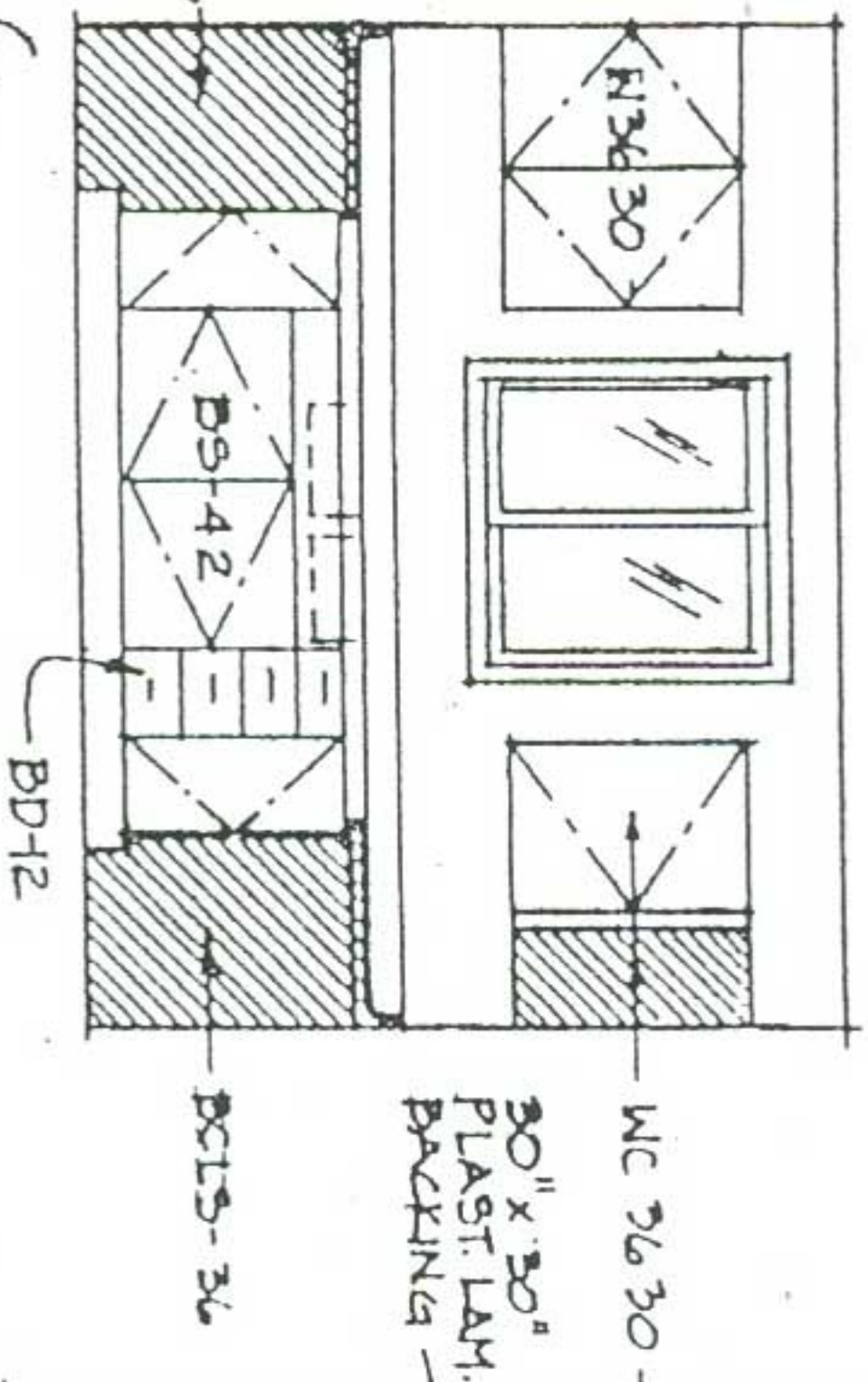
2x4 TRUSS DETAIL

3/8" = 1'-0"

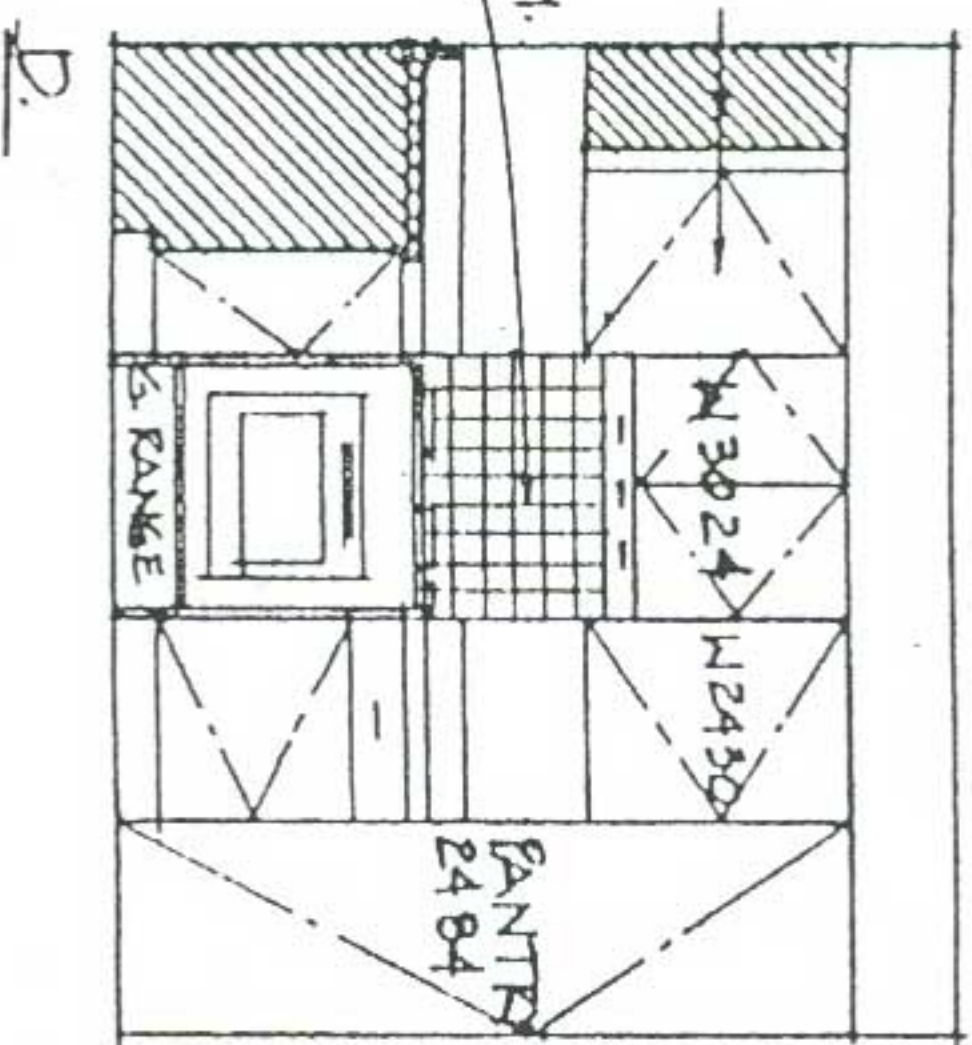
7'-7 1/2" FIN. DIM.
4'-6"



10'-6 1/4" FIN. DIMENSION
3'-0" 3'-0"

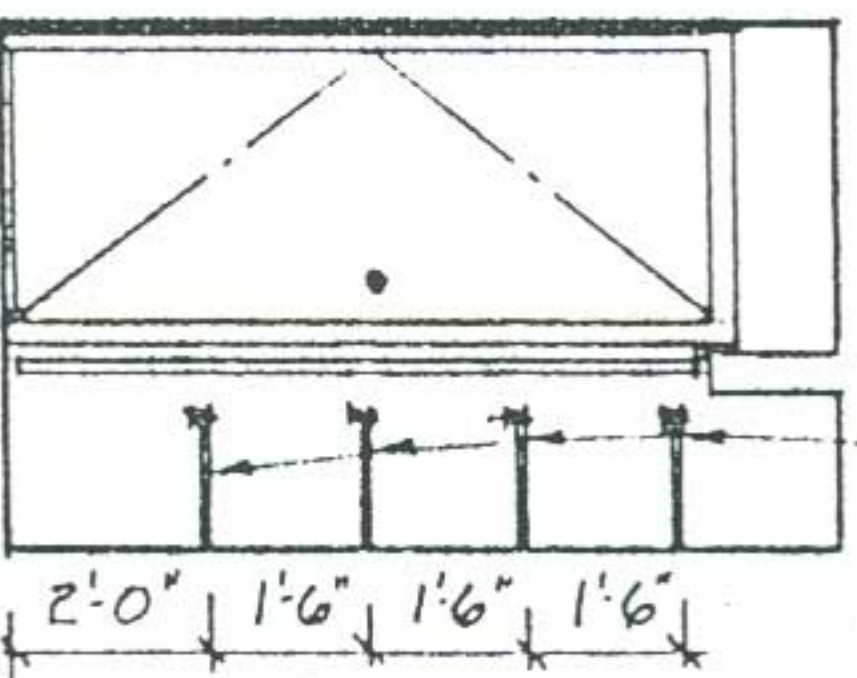
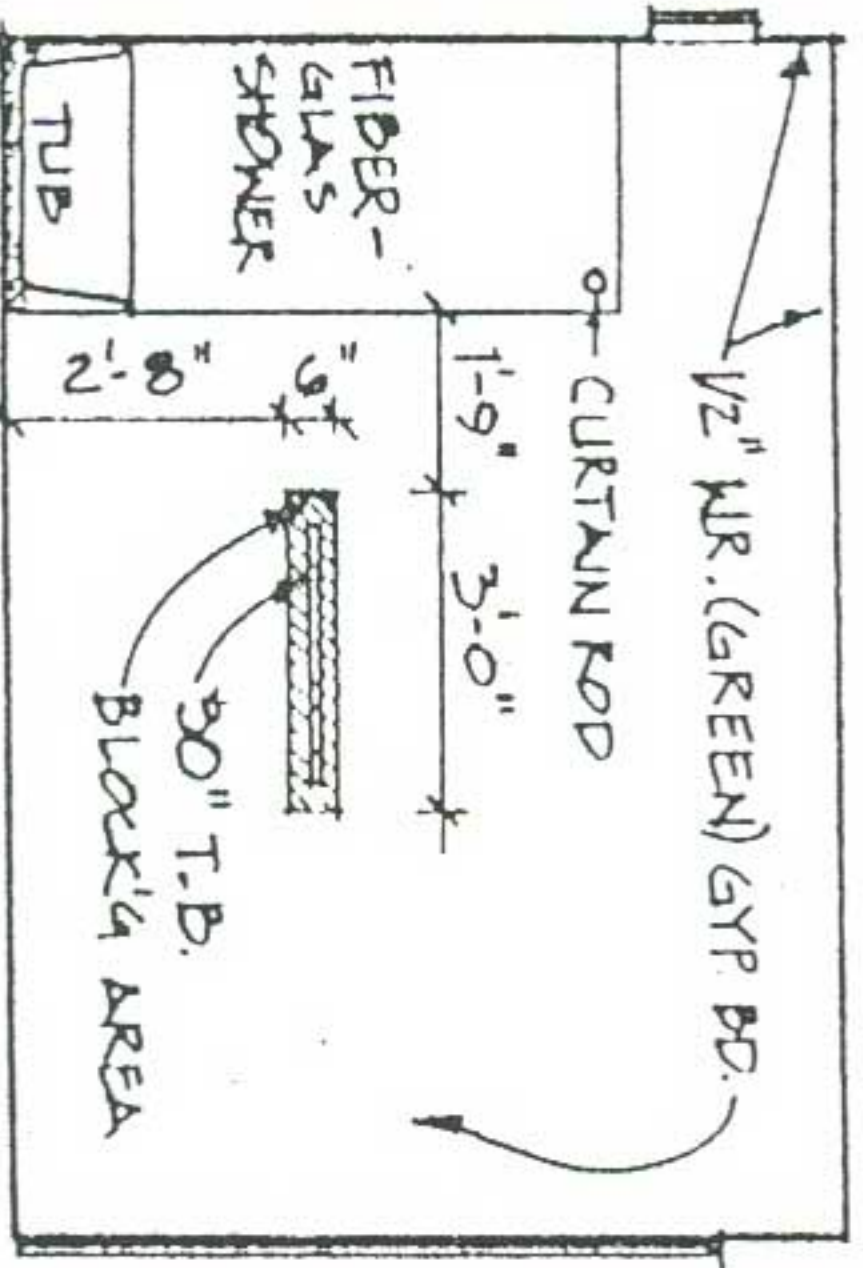


9'-6" FIN. DIM.
1'-0" 2'-0" 2'-6" 2'-0" 2'-0"

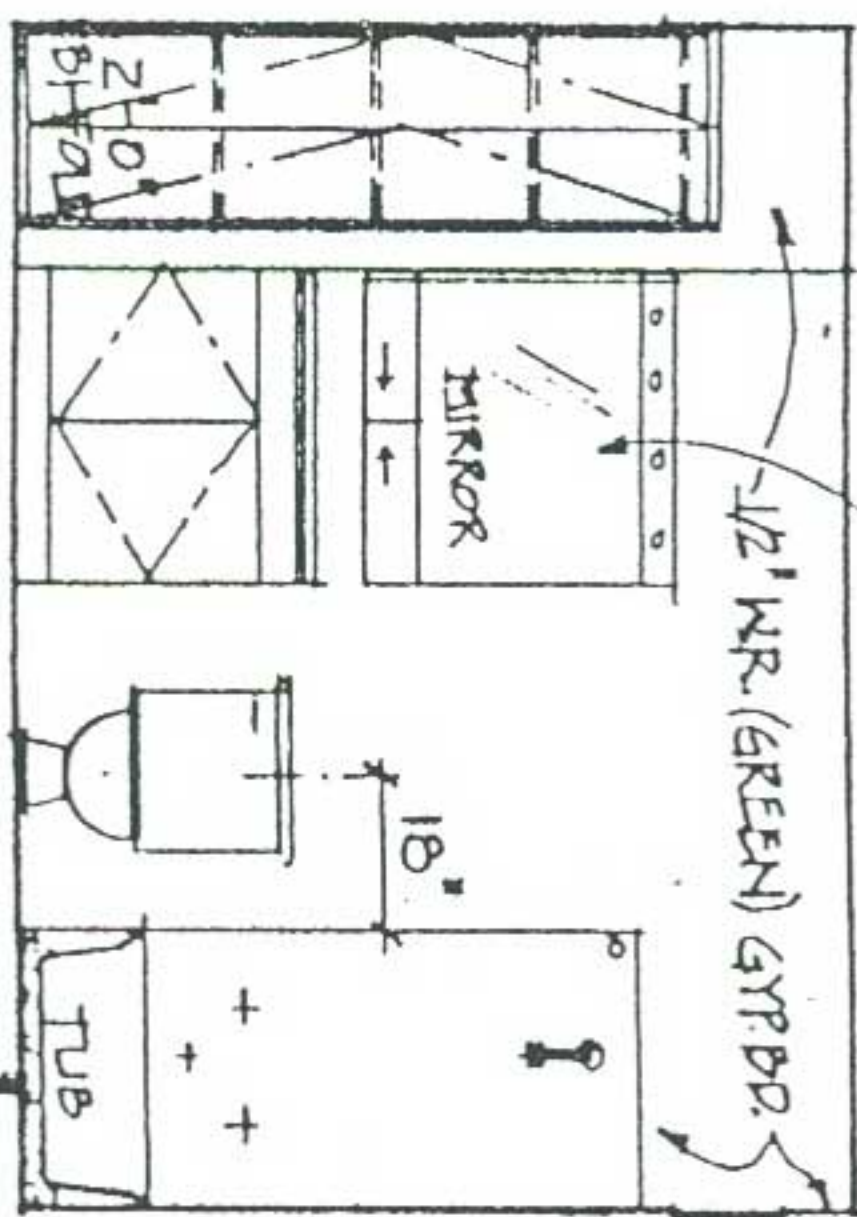


KITCHEN ELEVATIONS

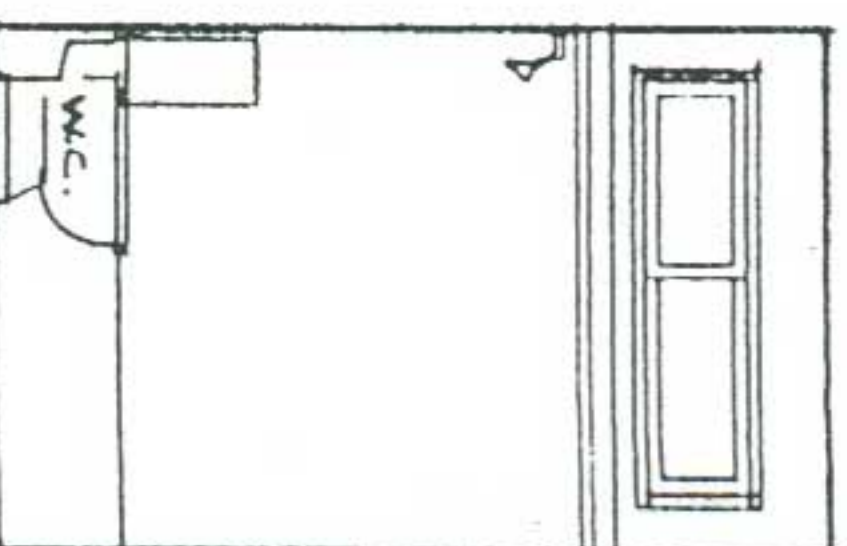
1/4" = 1'-0"



(4) - 15" x 24" x 3/4"
PLYND. SHELVES
W/ KZ NOSING



3/4" x 3/4" SURFACE MOUNT
MED. CAB W/ LIGHT
1/2" MR. (GREEN) GYP. BD.
EXPANDING FOAM
UNDER TUB



BATHROOM ELEVATIONS

1/4" = 1'-0"