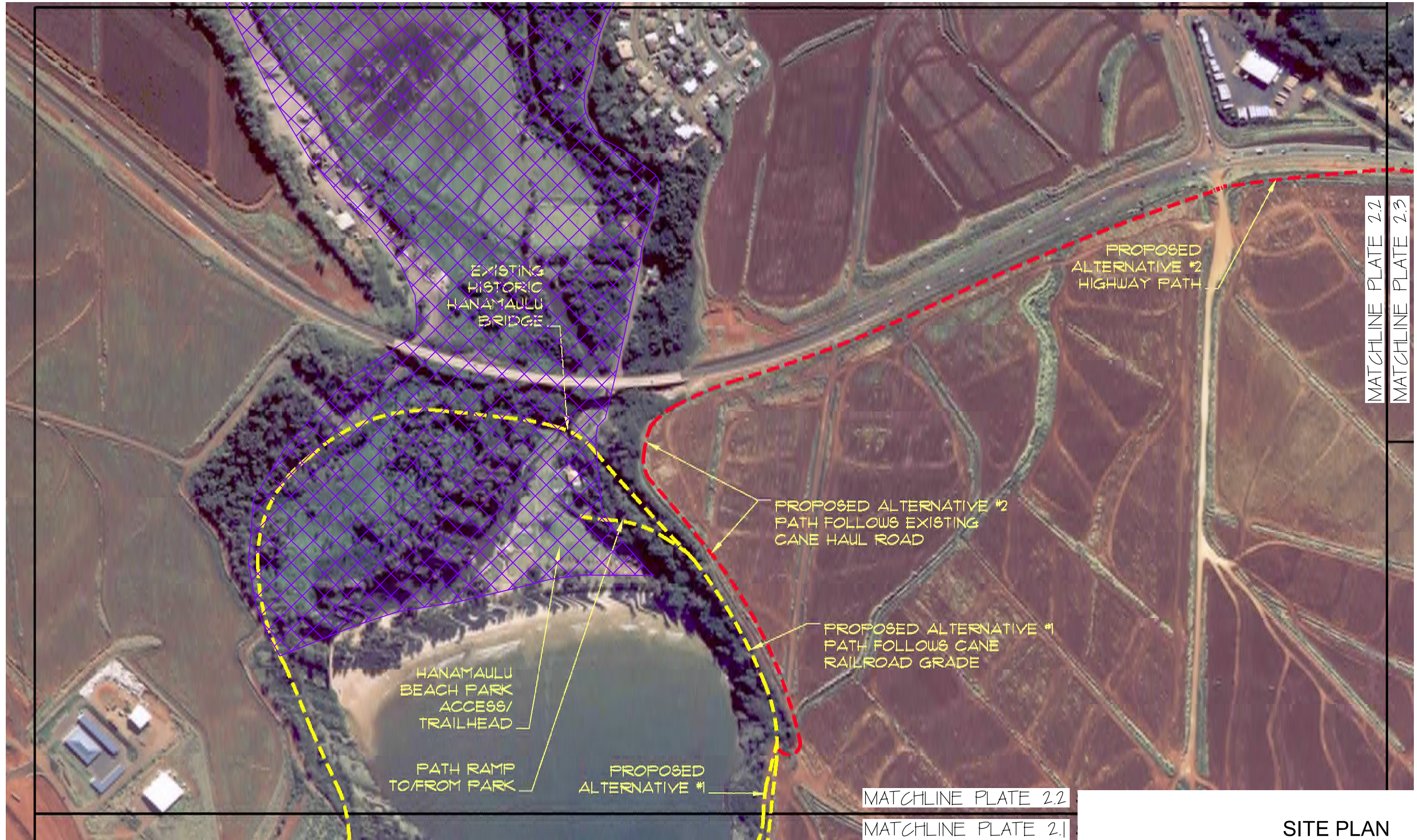
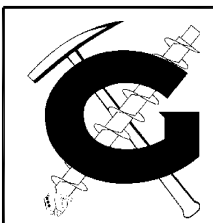
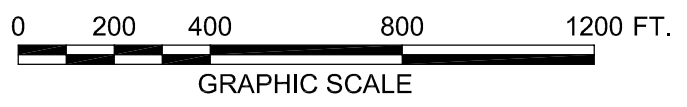
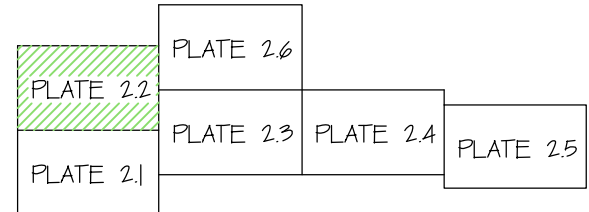


User: KIM File Created: October 03, 2005 File Last Updated: October 05, 2005 10:58:14am  
 File: T:\Drafting-9904\Working\5411-00\Ahukini-Lydgate\BikePath\5411-00\SitePlan.dwg\SitePlan2.2



- LEGEND:**
- ALTERNATIVE NO. 1
  - ALTERNATIVE NO. 2
  - ⊗ ESTIMATED SOFT GROUND AREAS
  - ⊗ ESTIMATED WETLAND AREAS



**SITE PLAN**  
 AHUKINI-LYDGATE BIKE/PEDESTRIAN PATH  
 FEDERAL AID PROJECT NO. STP-0700(51)  
 LIHUE, KAUAI, HAWAII

<b>GEOLABS, INC.</b>		
<i>Geotechnical Engineering</i>		
DATE OCTOBER 2005	DRAWN BY HYC	PLATE
SCALE 1" = 400'	W.O. 5411-00	<b>2.2</b>

REFERENCE:  
 PRELIMINARY PATH ALTERNATIVE ALIGNMENT PLANS TRANSMITTED BY MDG, INC. ON SEPTEMBER 30, 2005.