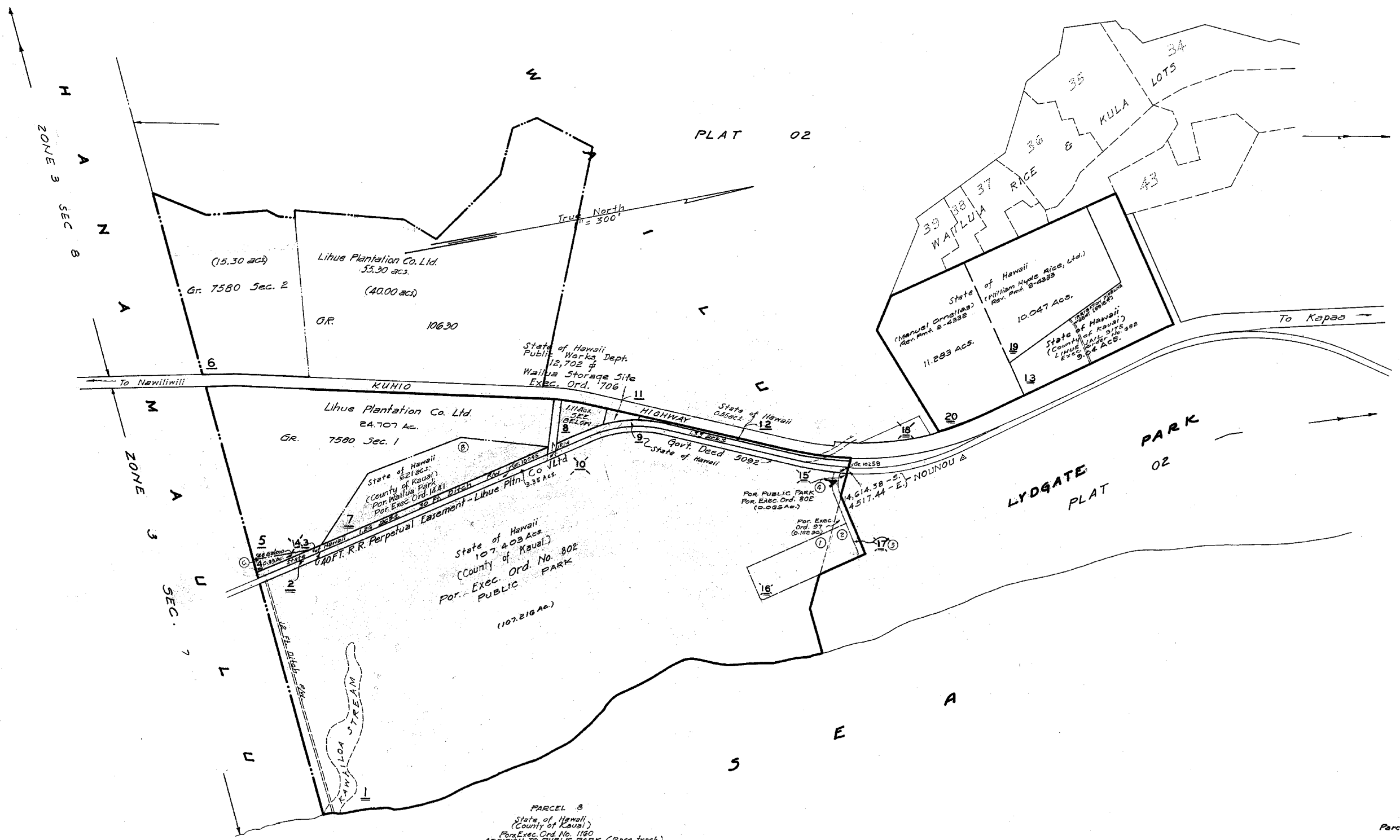


CORRECTED
JAN 22 1953
APR 5 4 1957
JUN 20 1959
AUG 18 1961
OCT 15 1963
DEC 12 1965
FEB 17 1967
MAY 20 1968
AUG 18 1970
OCT 15 1972
DEC 12 1974
FEB 17 1976
APR 15 1978
JUN 15 1980



Dwg. No. : 2965
Source : Tax Maps Bureau
By : H.N. & S.L.C. Sept., 1956.

PORTION OF WAILUA, LIHUE, KAUAI.

SUBJECT TO CHANGE

Parcel Dropped: 18,10,14

TAXATION MAPS BUREAU		
TERRITORY OF HAWAII		
TAX MAP		
FOURTH DIVISION		
ZONE	SEC.	PLAT
3	9	05
CONTAINING		PARCELS
		SCALE: 1 in. = 300 Ft.

PRINTED